

University of Illinois at Chicago



Performance Metrics

ENROLLMENTS, GRADUATION AND RETENTION RATES,
DEGREES AWARDED, AND GRADUATE EDUCATION UPDATES BY:
UNIVERSITY OFFICE FOR PLANNING AND BUDGETING

OCTOBER 13, 2017

REPORTED BY:
CHANCELLOR MICHAEL D. AMIRIDIS
NOVEMBER 16, 2017

Reported to the Board of Trustees
November 16, 2017

PEER GROUPS

Peer Group

SUNY, University at Buffalo

University of Alabama at Birmingham

University of Cincinnati

University of Connecticut

University of Louisville

University of South Florida - Tampa

University of Utah

Virginia Commonwealth University



PEER DATA SOURCES

NCES IPEDS Surveys

The US. Department of Education's National Center for Education Statistics (NCES) Integrated Postsecondary Education System (IPEDS) consists of a system of interrelated surveys conducted annually. IPEDS gathers information from every higher education institution in the United States covering a variety of topics ranging from enrollments, retention rates, graduation rates, financial aid, finances, faculty and staff. and student costs.

NSF Survey of Earned Doctorates (SED)

The Survey of Earned Doctorates (SED) is a federal survey conducted by the National Opinion Research Center (NORC) for the National Science Foundation (NSF). The SED gathers information annually from U.S. research doctorate graduates about their educational histories, funding sources, and post-doctoral plans.

ENROLLMENTS

AREAS OF EXCELLENCE

- Ranked in top 300 range in *The Times Higher Education World University Ranking*, among more than 1,300 international institutions
- Fall 2017 census of 30,539 students was highest 10th day enrollment ever:
 - Undergraduate enrollment increased by 8.3% (19,448) from last year
 - New undergraduate transfers increased by 11.8% (2,189) from last year
- Most diverse university among its peers, with 44% of undergraduates from underrepresented groups and 33% of total student body
- 2nd among the 115 top research universities (Carnegie classification) on percent of undergraduates that are Pell grant recipients (56%)
- Ranked #10 Most Diverse University in US News and World Reports 2017

AREAS OF EXCELLENCE

- **Increased participation in recruitment and outreach events, with over 1,000 recruitment events held**
- **Increased first year applications by 3%, with underrepresented application increase of 8%**
- **Added a recruiter focused on Midwest, out of region, recruitment**
- **Increase number of Transfer Admission Guarantee (TAG) Agreements to 11 community colleges**
- **Dedicated Admission staff to support Chicago Star Scholar Program, a partnership with City College of Chicago through the Guaranteed Admission Transfer (GAT) program**

STRATEGIES FOR SUCCESS

- **Completed first of a three-year undergraduate implementation of a state-of-the-art Customer (Student) Service Management software suite, Slate**
- **Implemented counselor portal for high school and community college counselors**
- **Improved marketing and communication efforts to prospects, applicants and admitted students:**
 - **Increased emphasis on conversion from admitted student status to enrolled status**
 - **More than 5,000,000 emails sent to recruits and applicants**
 - **More than 220,000 recruits managed in Slate management system**
 - **Completed over 13,500 tele-counseling sessions**
 - **Hosted 30,000+ visitors at the UIC Visitor Center for daily information sessions, transfer information sessions and campus tours. Continue to bring record number of visitors**
 - **Held two bilingual (Spanish) Saturday Admitted Student Sessions and tours, complimenting LARES sponsored events**
 - **Piloted expedited degree audit reports for admitted transfer students**

STRATEGIES FOR SUCCESS

- **Continue UIC Merit Tuition Rate (Chicago Grant) program:**
 - Enrolled 160 recipients in Fall 2017
 - Out-of-state student enrollment increased 41% (179 to 252) from 2014 to 2017
- **Expand “Avenue via Excellence” program to automatically admit Illinois residents in the top 4% of graduating class**
 - Program enrolled 14 students who would have otherwise not been admitted, Fall 2017
- **Continue target 30 Illinois high schools historically known for high number of well-qualified African American Applicants**
- **Implement previously piloted ACCESS program (augmented admission review):**
 - Admitted 225 students earlier than in previous years
 - Enrolled 31 students through non-cognitive assessment interviews, Fall 2017
- **Continue membership in "I'm First" college search engine and College Greenlight for first generation college students**

UIC and Peer Institutions Fall Term Enrollment

Fall 2011 – Fall 2017

Institution	All Student Total							Undergraduate							Graduate and Professional						
	2011	2012	2013	2014	2015	2016	2017	2011	2012	2013	2014	2015	2016	2017	2011	2012	2013	2014	2015	2016	2017
University of Illinois at Chicago	28,091	27,875	28,038	27,969	29,048	29,120	30,539	16,925	16,678	16,671	16,718	17,575	17,959	19,448	11,166	11,197	11,367	11,251	11,473	11,161	11,091
SUNY, University at Buffalo	28,849	28,952	29,850	29,995	29,796			19,334	19,514	19,831	19,882	19,953			9,515	9,438	10,019	10,113	9,843		
University of Alabama at Birmingham	17,575	17,999	18,568	18,698	18,333			11,128	11,291	11,502	11,679	11,511			6,447	6,708	7,066	7,019	6,822		
University of Cincinnati	33,329	33,347	34,379	35,313	36,042			22,893	23,096	23,706	24,300	25,009			10,436	10,251	10,673	11,013	11,033		
University of Connecticut	25,868	25,483	25,911	26,541	27,043			17,815	17,528	18,032	18,395	18,826			8,053	7,955	7,879	8,146	8,217		
University of Louisville	21,152	21,239	21,444	21,561	21,294			15,596	15,724	15,954	15,961	15,768			5,556	5,515	5,490	5,600	5,526		
University of South Florida - Tampa	39,596	41,116	41,428	41,938	42,067			29,975	31,125	31,100	31,067	31,111			9,621	9,991	10,328	10,871	10,956		
University of Utah	31,660	32,388	32,077	31,515	31,592			24,297	24,840	24,492	23,907	23,794			7,363	7,548	7,585	7,608	7,798		
Virginia Commonwealth University	31,627	31,445	30,974	30,848	30,918			23,498	23,661	23,356	23,661	23,741			8,129	7,784	7,618	7,187	7,177		

Data Source: IPEDS Data Center. Includes on- and off-campus enrollments.



UIC and Peer Institutions First-Time Freshmen Enrollment Fall 2010 – Fall 2017

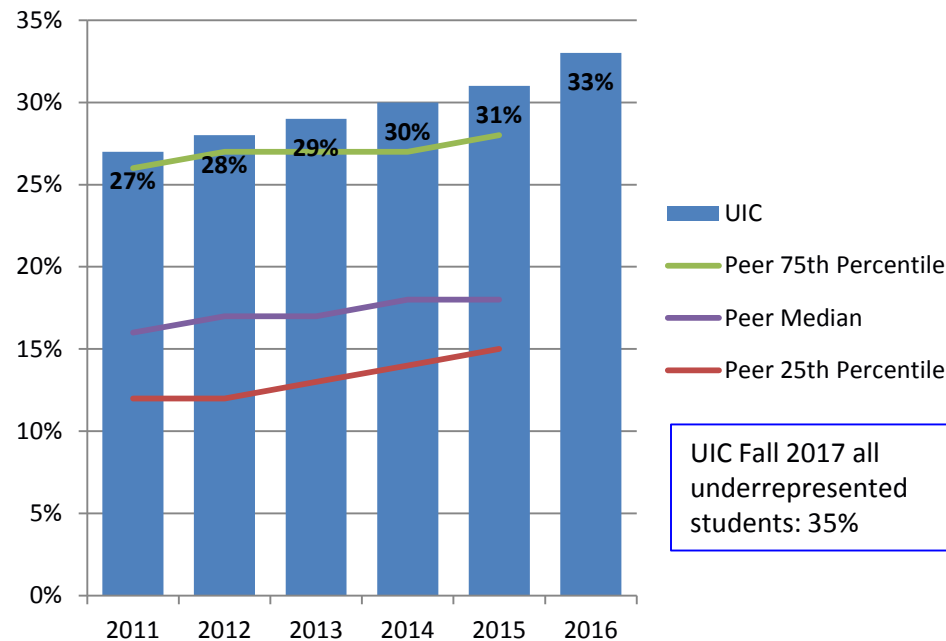
	2011	2012	2013	2014	2015	2016	2017
University of Illinois at Chicago	3,115	3,123	3,104	3,030	3,485	3,307	4,051
SUNY, University at Buffalo	3,255	3,647	3,653	3,517	3,621		
University of Alabama at Birmingham	1,606	1,676	1,773	1,748	1,621		
University of Cincinnati	4,300	4,160	4,486	4,618	4,435		
University of Connecticut	3,327	3,114	3,755	3,588	3,774		
University of Louisville	2,569	2,705	2,855	2,887	2,806		
University of South Florida - Tampa	3,378	3,750	3,736	4,116	4,133		
University of Utah	3,268	3,494	3,124	3,151	3,410		
Virginia Commonwealth University	3,742	3,554	3,526	3,531	3,997		

Data Source: IPEDS Data Center. Includes on- and off-campus enrollments.



PERCENT OF ALL STUDENTS FROM UNDERREPRESENTED* GROUPS FALL 2011 – FALL 2017

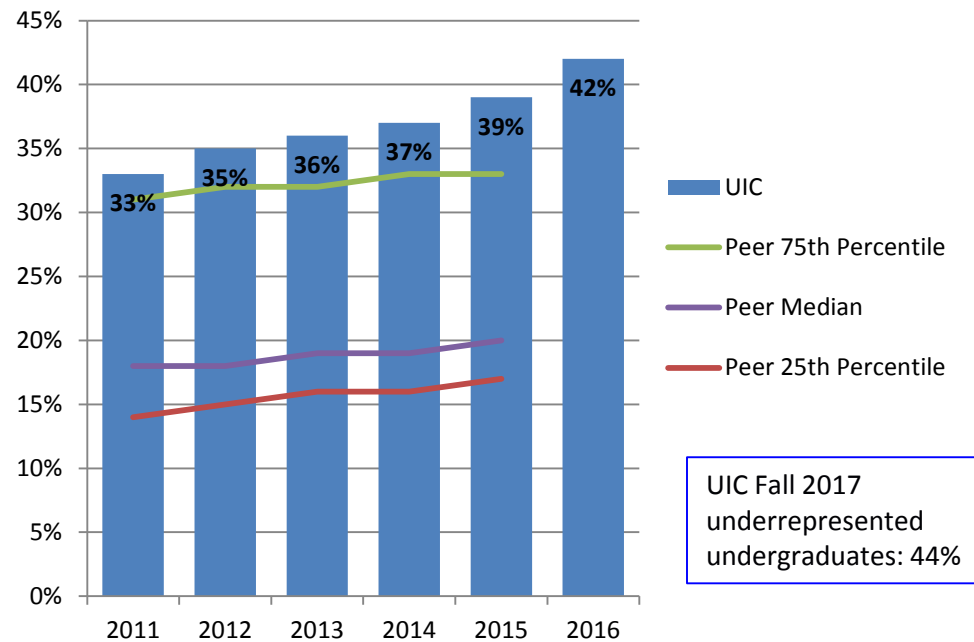
The percent of all students from underrepresented groups at UIC is second highest among its peer group.



* Includes Black, Hispanic, American Indian, Native Hawaiian/Other Pacific Islander, and multi-racial students.

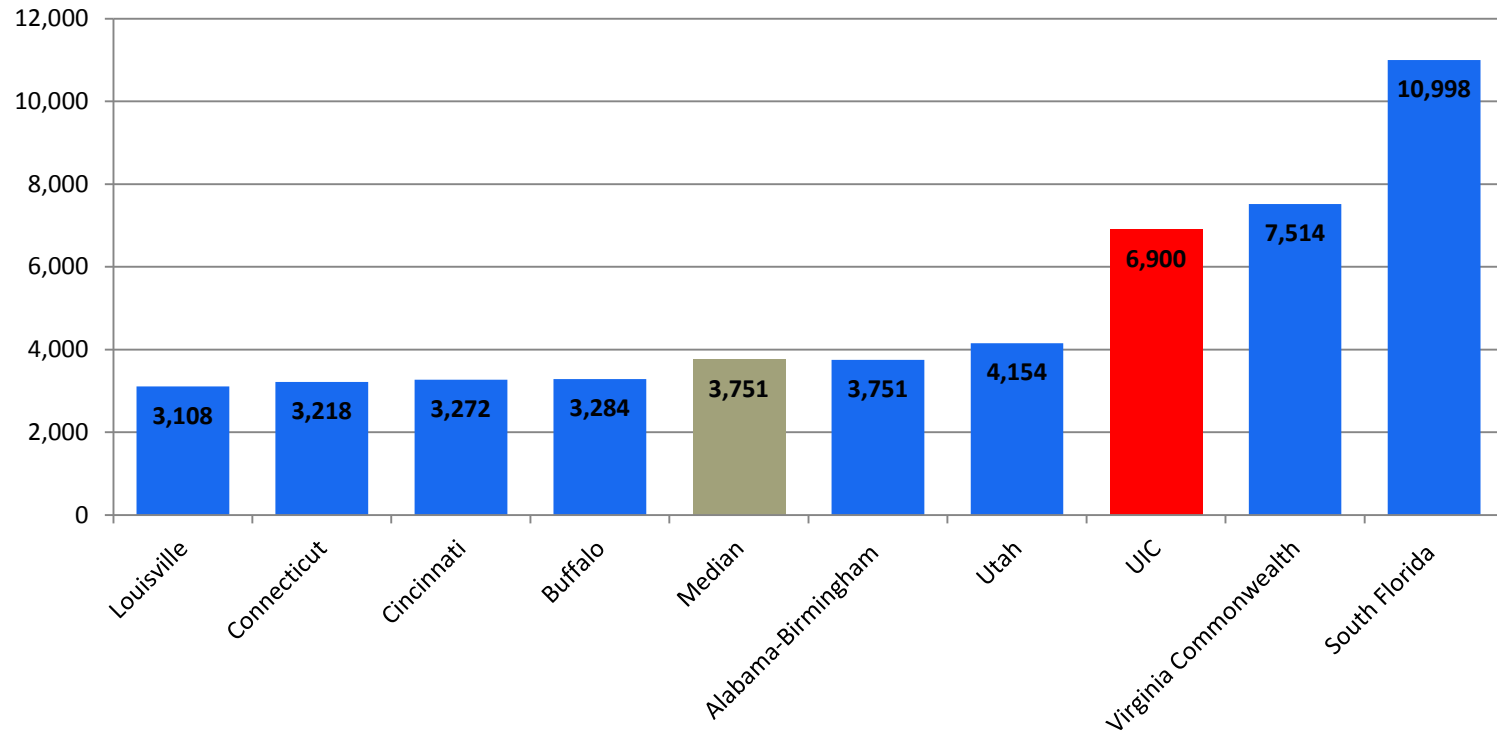
PERCENT ENROLLED UNDERGRADUATE STUDENTS FROM UNDERREPRESENTED* GROUPS, FALL 2011 – FALL 2017

The percent of undergraduate students from underrepresented groups at UIC is the highest among its peer group and double the peer median.



* Includes Black, Hispanic, American Indian, Native Hawaiian/Other Pacific Islander, and multi-racial students.

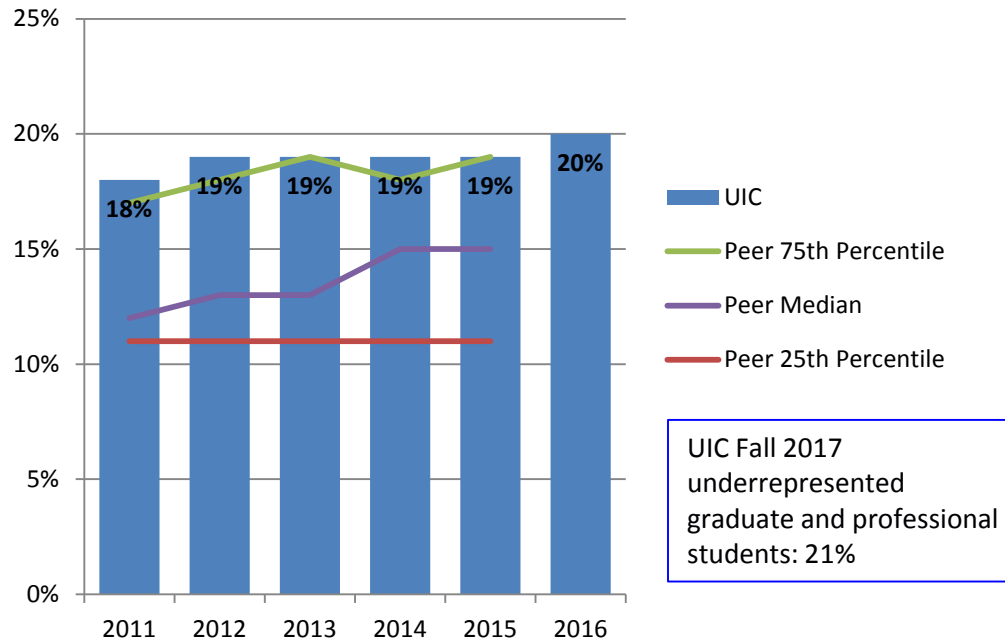
NUMBER OF UNDERGRADUATE STUDENTS FROM UNDERREPRESENTED* GROUPS FALL 2015



* Includes Black, Hispanic, American Indian, Native Hawaiian/Other Pacific Islander, and multi-racial students.

PERCENT ENROLLED GRADUATE AND PROFESSIONAL STUDENTS FROM UNDERREPRESENTED* GROUPS, FALL 2011 – FALL 2017

The percent of graduate and professional students from underrepresented groups at UIC is second highest among its peer group.



* Includes Black, Hispanic, American Indian, Native Hawaiian/Other Pacific Islander, and multi-racial students.



GRADUATION AND RETENTION RATES

CURRENT TRENDS

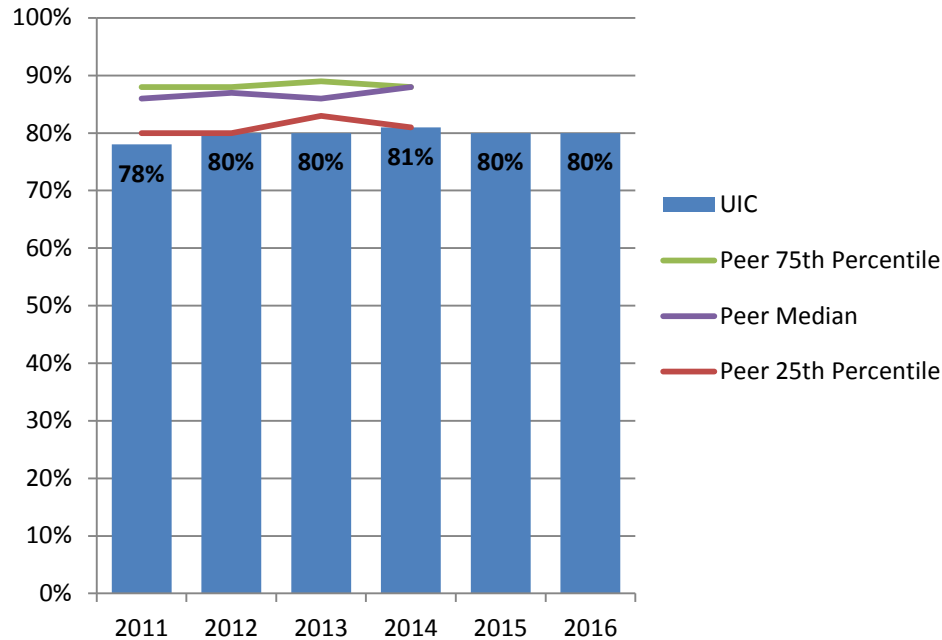
- **One-year retention rate is 80% for the Fall 2016 freshmen entering class**
- **Six-year graduation rate is 57% for the Fall 2011 freshmen entering class, which is within the range for the last five entering classes (Fall 2006 through Fall 2010 ranged from 57% to 60%)**
- **Five-year graduation rate for Fall 2011 transfers is 78%, higher than the fall 2010 cohort (76%)**

STRATEGIES FOR STUDENT SUCCESS

- **Launched the Flames Leadership Network Program**
- **Added a Physics Enrichment Workshop in the 2017 Summer College**
- **Innovations in undergraduate student advising**
 - **Piloted the use of non-cognitive factors in first-year advising**
 - **Developed interventions for strengthening non-cognitive student skills**
 - **Completed the RFP for purchasing an Integrated Planning and Advising System (IPAS)**
- **Launched a Degree Completion Grant Program**
- **Expanded the Transition Coaching Program**
- **Continued research on student success**
 - **Early Alerts**
 - **Student On-Track Index**
 - **First-Year Seminars**
 - **Non-Cognitive Factors**
 - **Summer Session**
 - **Retention and Graduation Factors**

FRESHMAN TO SOPHOMORE ONE-YEAR RETENTION RATES 2011 – 2016 COHORTS

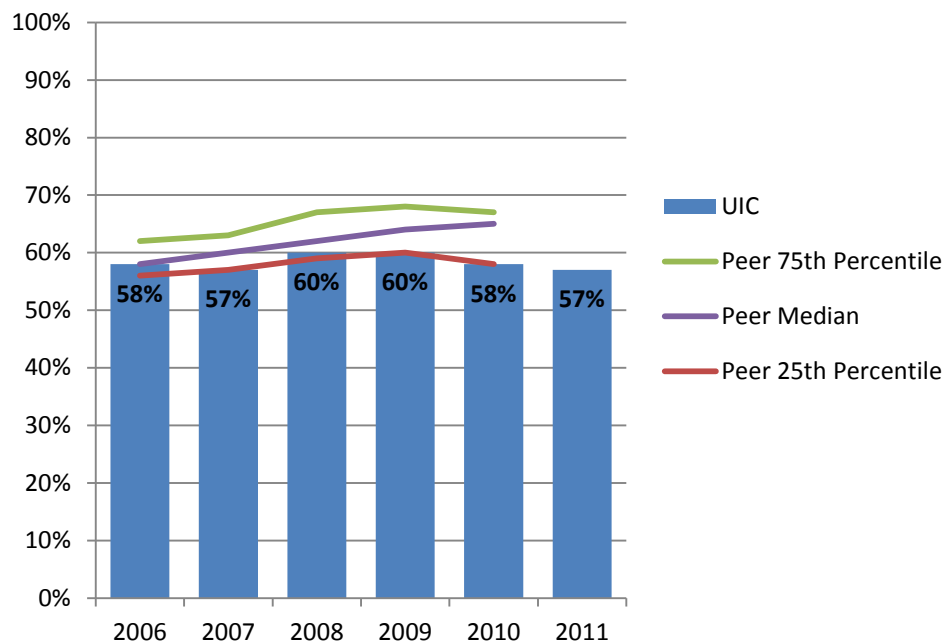
The one-year retention rate at UIC is below the 25th percentile of its peer group.



* Year represent year of entering cohort (e.g., 2016 is fall 2016 entering freshmen returning in fall 2017).

FIRST-TIME FRESHMEN SIX-YEAR GRADUATION RATES 2006 – 2011 COHORTS

The six year graduation rate at UIC is below the median and near the 25th percentile of its peer group.



* Year represent year of entering cohort (e.g., 2011 is fall 2011 entering freshmen graduating by summer 2017).



DEGREES AWARDED



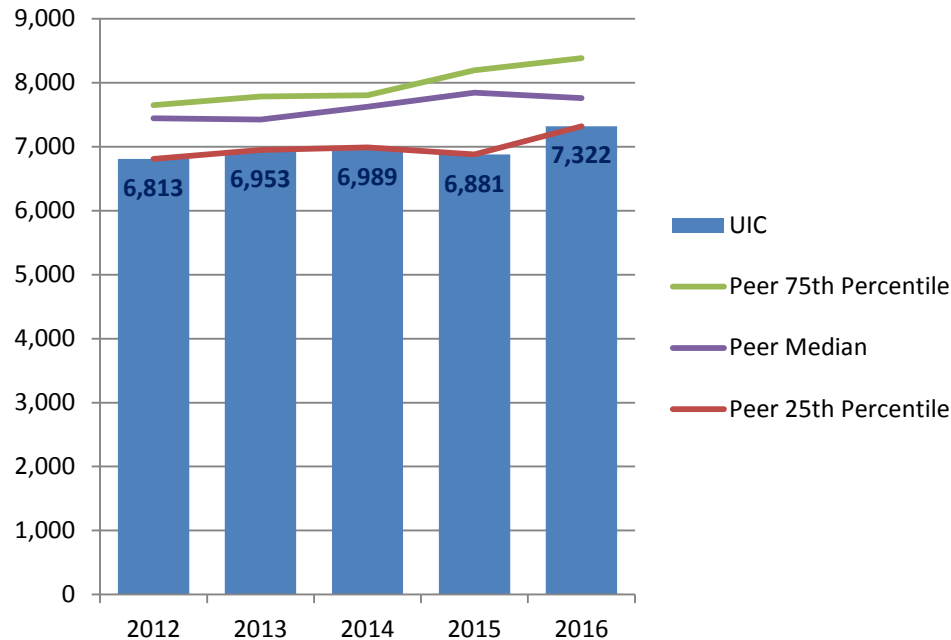
AREAS OF EXCELLENCE

UIC awards more degrees in the following areas than peers:

- **Health related professional degrees**
- **Total health related degrees**
- **Degrees to underrepresented groups at all levels**

NUMBER OF TOTAL DEGREES GRANTED FY 2012 – FY 2016

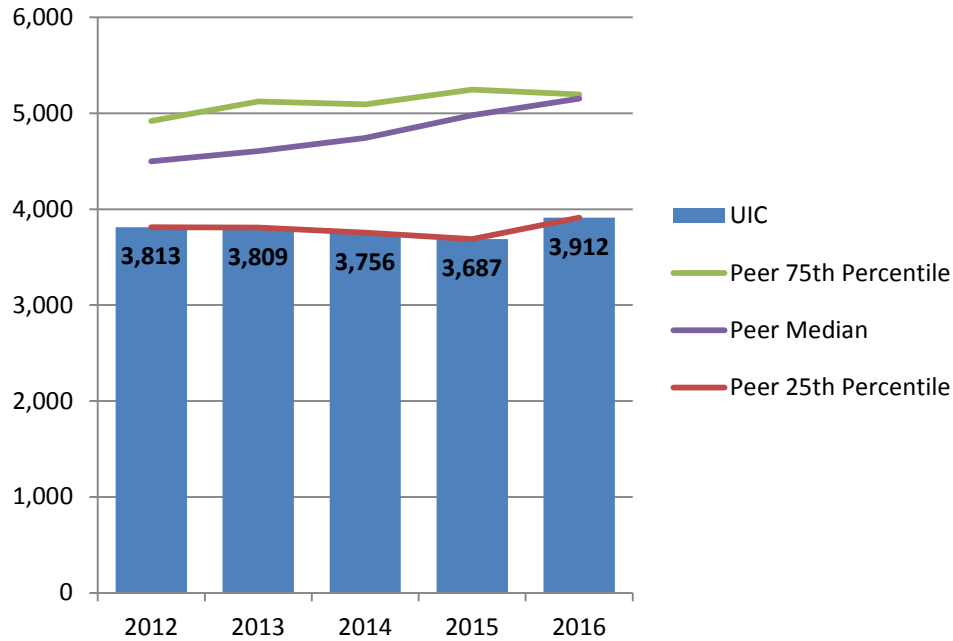
The total number of degrees granted by the UIC is near the 25th percentile of its peer group.



Note: Only includes bachelor, master, doctoral, and professional degrees; excludes associate degrees and certificates. Degrees awarded from July 1 to June 30 of each fiscal year.

NUMBER OF BACHELOR DEGREES GRANTED FY 2012 – FY 2016

UIC grants fewer undergraduate degrees than its peer median.

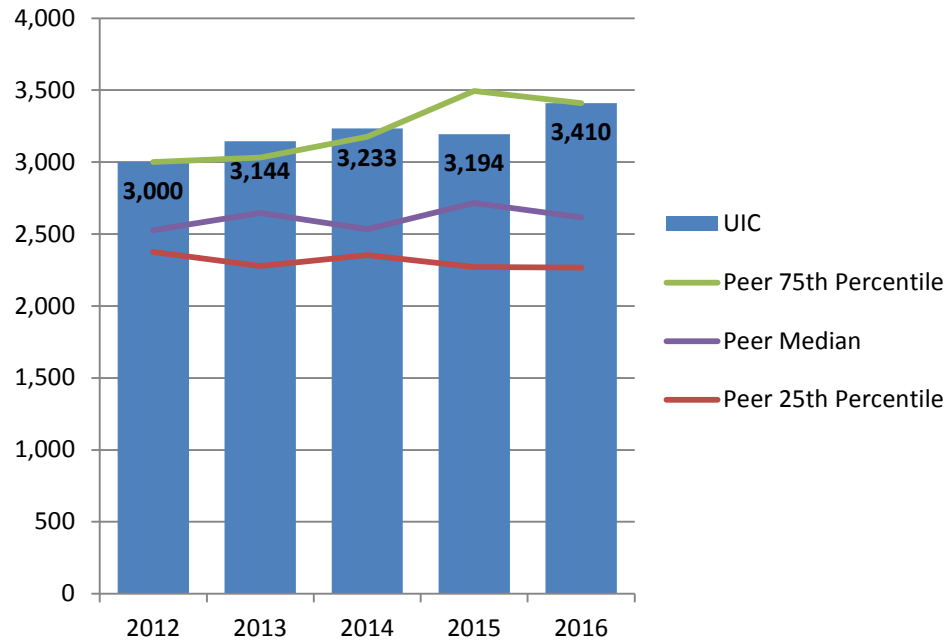


Note: Only includes bachelor degrees, excludes associate degrees and certificates. Degrees awarded from July 1 to June 30 of each fiscal year.



NUMBER OF GRADUATE AND PROFESSIONAL DEGREES GRANTED FY 2012 – FY 2016

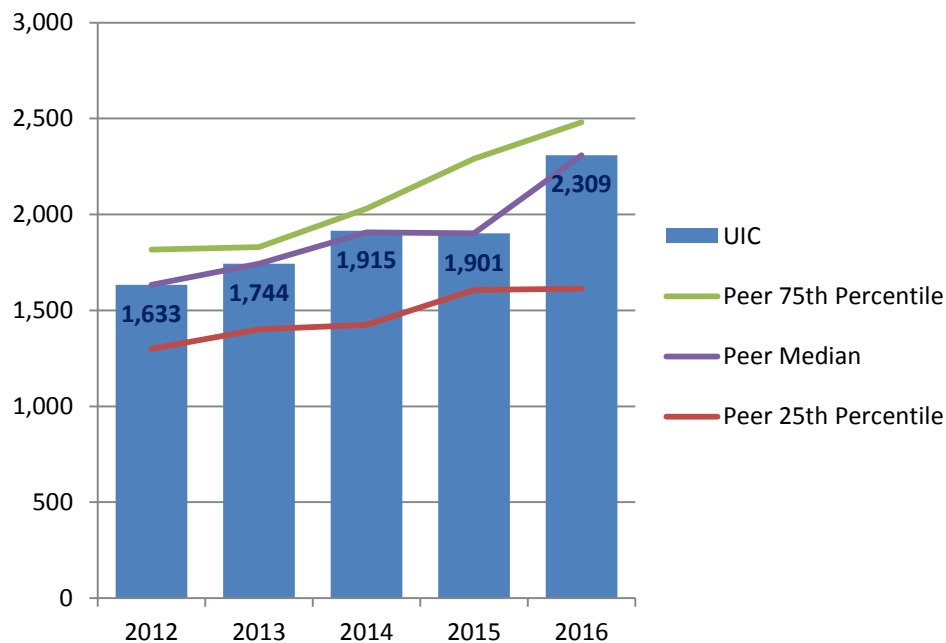
UIC grants more graduate and professional degrees than its peer median.



Note: Only includes master, doctoral, and professional degrees; excludes certificates. Degrees awarded from July 1 to June 30 of each fiscal year.

NUMBER OF TOTAL DEGREES GRANTED IN STEM* FIELDS FY 2012 – FY 2016

The total number of degrees granted in STEM fields at the UIC is near the peer median.

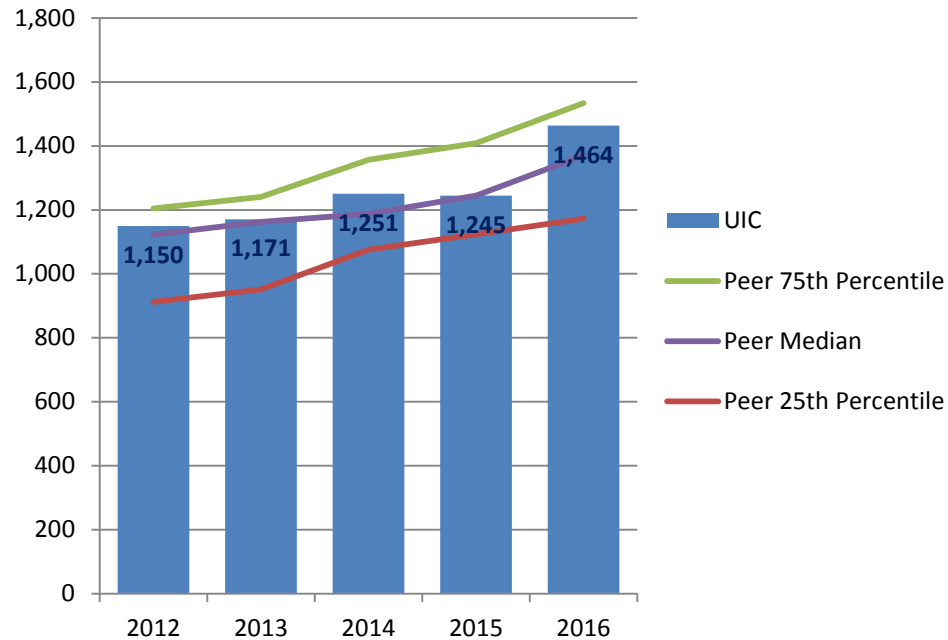


* Science, Technology, Engineering, and Mathematics.

NUMBER OF BACHELOR DEGREES GRANTED IN STEM* FIELDS

FY 2012 – FY 2016

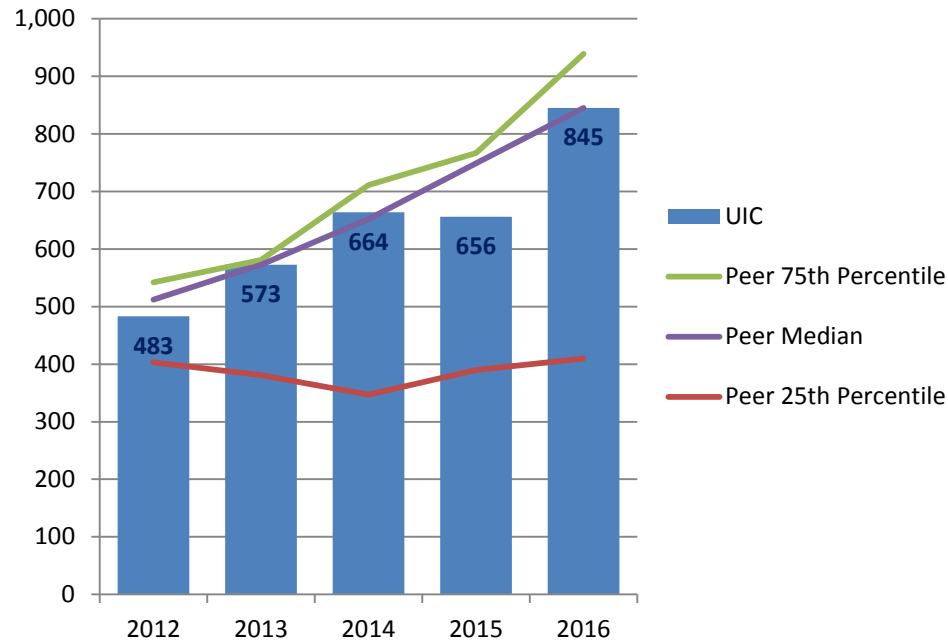
The number of bachelor degrees granted in STEM fields at UIC is above the median of its peer group.



* Science, Technology, Engineering, and Mathematics.

NUMBER OF MASTER AND DOCTORAL DEGREES GRANTED IN STEM* FIELDS FY 2012 – FY 2016

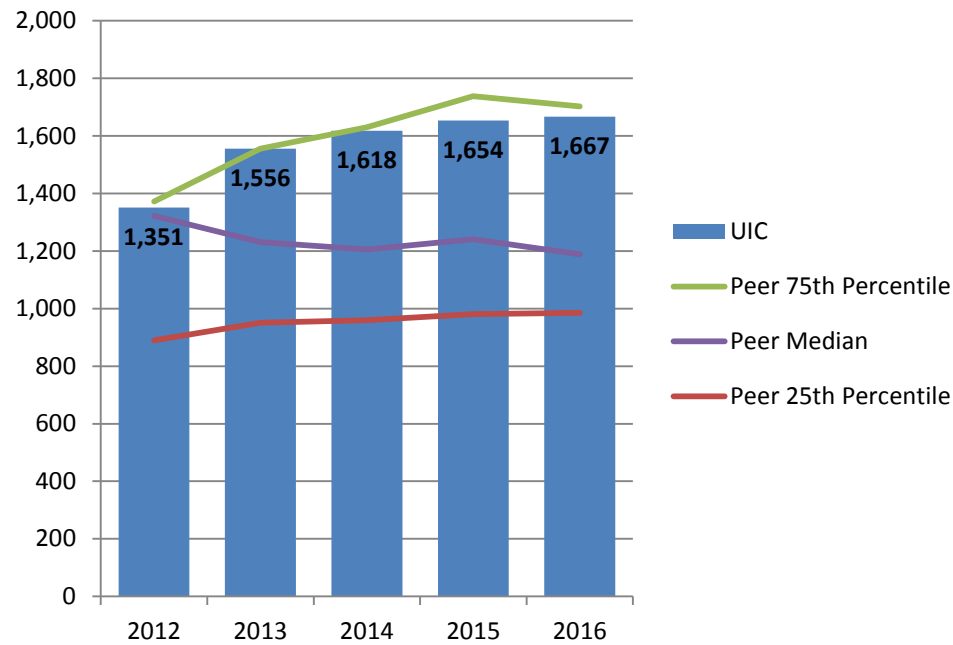
The number of graduate degrees granted in STEM fields at the UIC is near the median of its peer group.



* Science, Technology, Engineering, and Mathematics.

NUMBER OF TOTAL HEALTH-RELATED DEGREES GRANTED FY 2012 – FY 2016

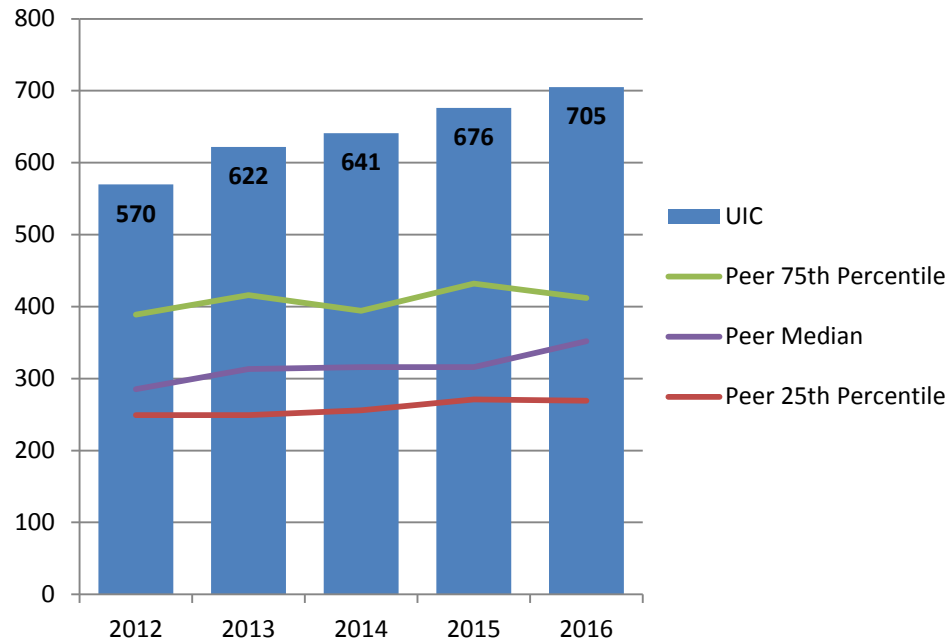
The total number of health-related degrees granted at UIC is near the 75th percentile of its peer group.



Note: Includes all degrees reported under the Classification of Instructional Programs (CIP) two digit code 51 (health sciences and related clinical sciences).

NUMBER OF PROFESSIONAL HEALTH-RELATED DEGREES GRANTED FY 2012 – FY 2016

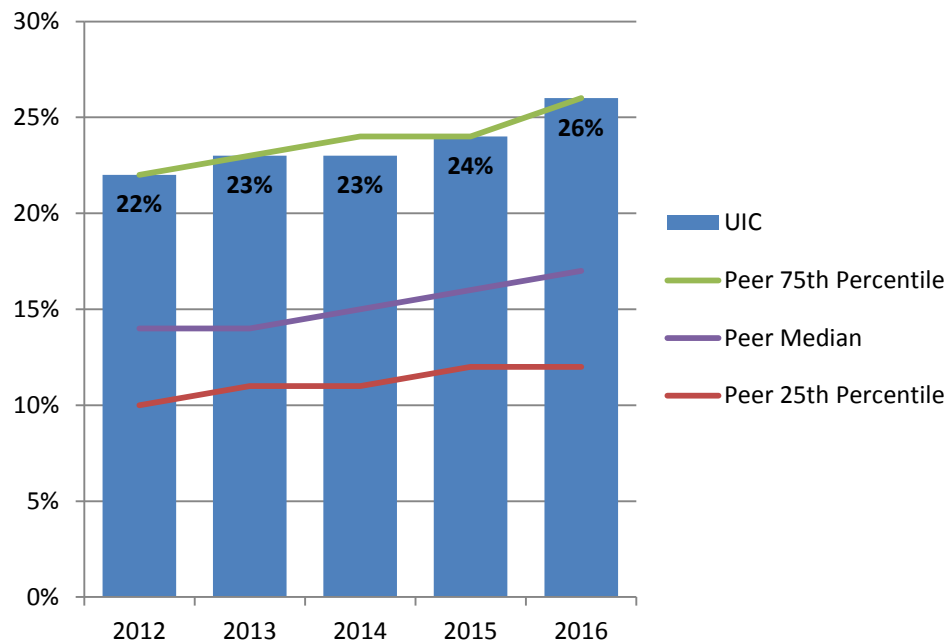
The number of first-professional health-related degrees granted at UIC is the highest of its peer group.



Note: Includes all first-professional degrees reported under the Classification of Instructional Programs (CIP) two digit code 51 (health sciences and related clinical sciences).

PERCENT TOTAL DEGREES GRANTED TO STUDENTS FROM UNDERREPRESENTED* GROUPS FY 2012 – FY 2016

The percent of total degrees awarded to students from underrepresented groups at the UIC is near the peer 75th percentile.



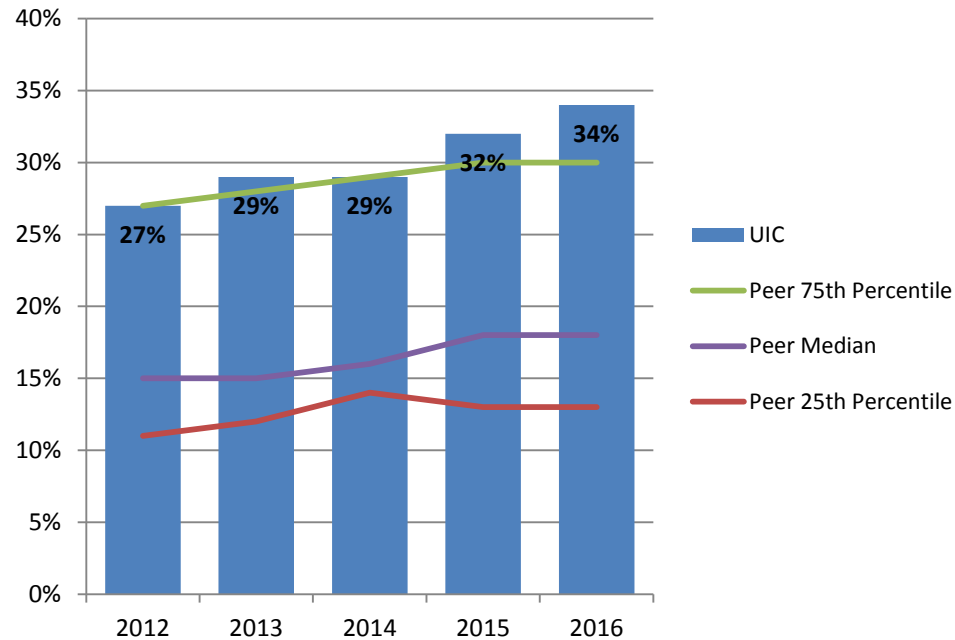
* Includes Black, Hispanic, American Indian, Native Hawaiian/Other Pacific Islander, and multi-racial students.

Note: Only includes bachelor, master, doctoral, and professional degrees; excludes associate degrees and certificates. Degrees awarded from July 1 to June 30 of each fiscal year.



PERCENT BACHELOR DEGREES GRANTED TO STUDENTS FROM UNDERREPRESENTED* GROUPS, FY 2012 – FY 2016

The percent of bachelor degrees granted at UIC to students from underrepresented groups is 2nd highest of its peer group members.



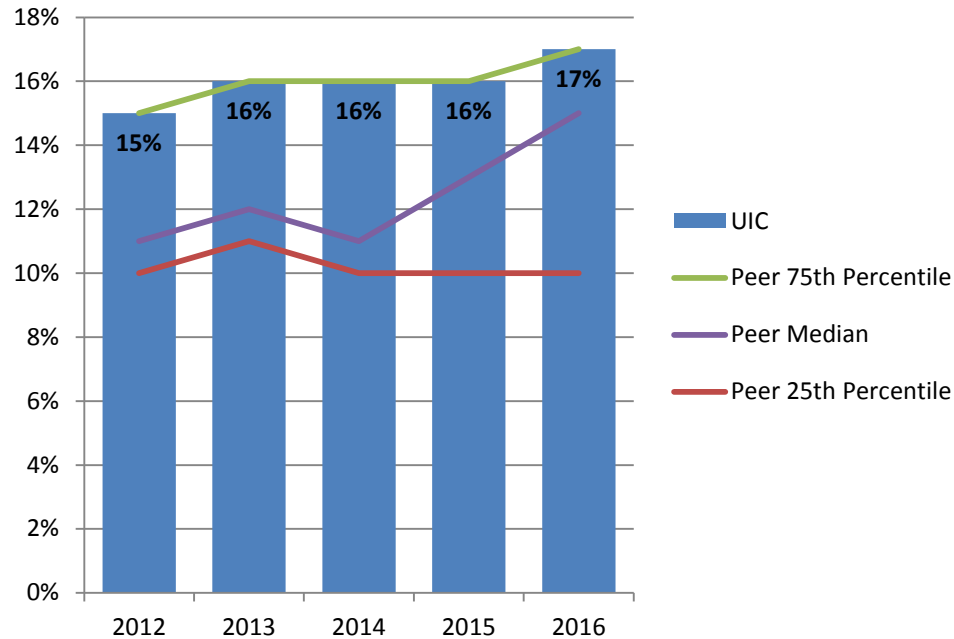
* Includes Black, Hispanic, American Indian, Native Hawaiian/Other Pacific Islander, and multi-racial students.

Note: Only includes bachelor degrees, excludes associate degrees and certificates. Degrees awarded from July 1 to June 30 of each fiscal year.



PERCENT GRADUATE AND PROFESSIONAL DEGREES GRANTED TO STUDENTS FROM UNDERREPRESENTED* GROUPS, FY 2012 – FY 2016

The percent of graduate and professional degrees granted at UIC to students from underrepresented groups is near the 75th percentile of its peer group.



* Includes Black, Hispanic, American Indian, Native Hawaiian/Other Pacific Islander, and multi-racial students.

Note: Only includes master, doctoral, and professional degrees; excludes certificates. Degrees awarded from July 1 to June 30 of each fiscal year.



GRADUATE EDUCATION



AREAS OF EXCELLENCE

- Graduate and professional programs maintained high national rankings
 - #4 Occupational Therapy
 - #6 Pharmacy
 - #10 City Management and Urban Policy
 - #15 Physical Therapy
 - #17 Public Health
 - #20 Doctor of Nursing Practice
 - #27 Social Work
 - #35 English Ph.D. Program
 - #48 Education
 - #52 Best Medical Schools – Research
 - #63 Engineering

Source: *US News & World Report*



AREAS OF EXCELLENCE

- **“Pipeline to an Inclusive Faculty” program at UIC to recruit and support outstanding underrepresented PhD students**
- **Offered professional development opportunities for graduate students:**
 - **Conducted over 50 academic and writing skills workshops/events**
 - **Emphasized topics such as life skills, wellness, and career and professional development**
 - **Provided courses in college level teaching, writing and communication skills, and responsible conduct of research**
- **Provided fellowship and research funding opportunities focused on interdisciplinary research, external proposal development, and degree completion in all disciplines**
- **Introduced underrepresented undergraduates from UIC and around the country to research and graduate school opportunities at UIC through the Summer Research Opportunities Program**
- **Provided summer transition and mentoring programs for underrepresented graduate students to enhance their success and engagement**

STRATEGIES FOR SUCCESS

- **Improve graduate student progress to degree:**
 - Continue to mandate that programs track students and provide annual progress reports
 - Work with graduate programs to optimize requirements and shorten time-to-degree
 - Reduce financial stop-outs by increasing fellowship funding through philanthropic giving and providing assistance in identifying and applying for external funding awards
- **Enhance recruitment, retention and graduation of underrepresented graduate students as a first step in diversifying faculty at UIC and around the country:**
 - Identify and recruit promising underrepresented students who are interested in pursuing academic careers
 - Increase targeted fellowships, participation in undergraduate-to-graduate research transition programs and mentoring programs

STRATEGIES FOR SUCCESS

- **Address student job preparation and placement upon degree completion, particularly for non-STEM students:**
 - Continue to develop and offer professional development workshops
 - Incentivize workshop participation by connecting attendance to fellowship funding
 - Encourage students to find summer internships through new funding opportunities
 - Improve career services for graduate students

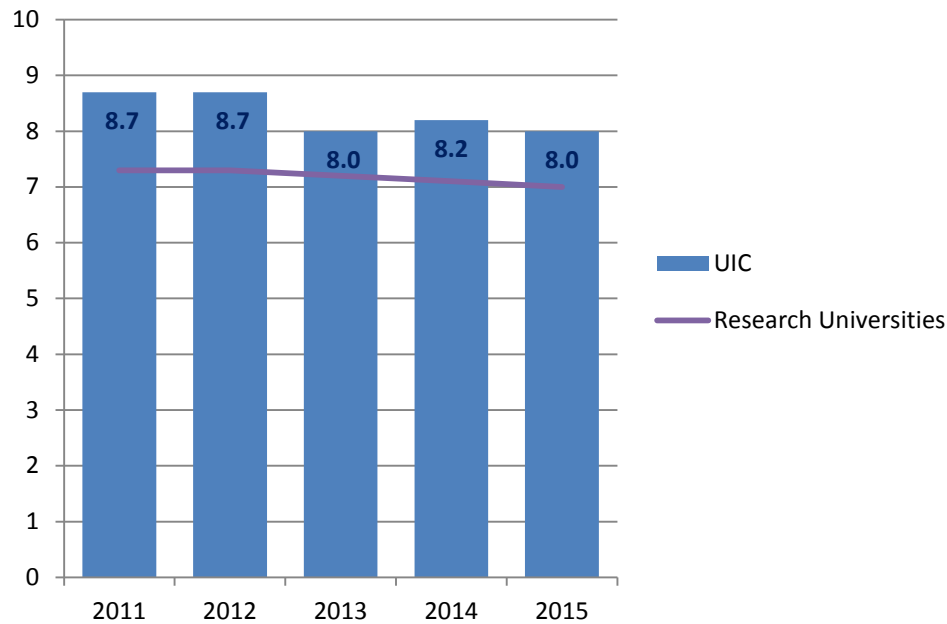
UIC NUMBER OF DOCTORAL PROGRAMS , FALL 2016

<u>Field of Study</u>	<u>Number</u>
Education	4
Engineering	7
Humanities	8
Life Sciences	19
Other Non-Science and Engineering	3
Physical Sciences	6
Social Sciences	<u>10</u>
	57

Note: List includes programs with enrollment in Fall 2016, including those programs in phase down. Fields of study at concentration level have been excluded.

DOCTORAL MEDIAN TIME TO DEGREE SINCE STARTING GRADUATE SCHOOL (NUMBER OF YEARS), AY 2011 – AY 2015

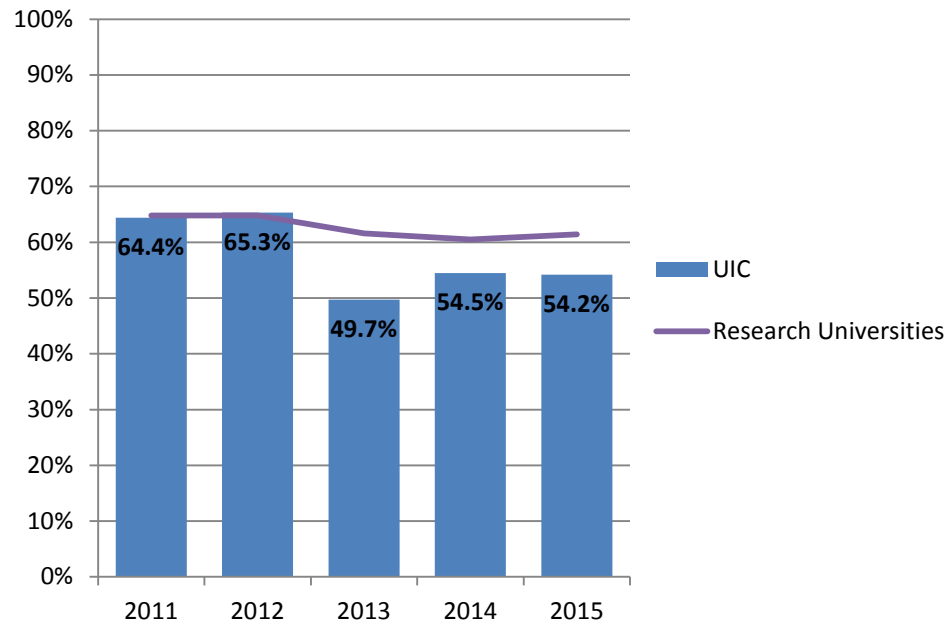
The time to complete a doctoral degree at UIC is higher than the average for research universities.



Data Source: Institutional Profile from the Survey of Earned Doctorates.

PERCENT DOCTORATES WITH EMPLOYMENT OR POSTDOCTORAL RESEARCH TRAINING COMMITMENTS, AY 2011 – AY 2015

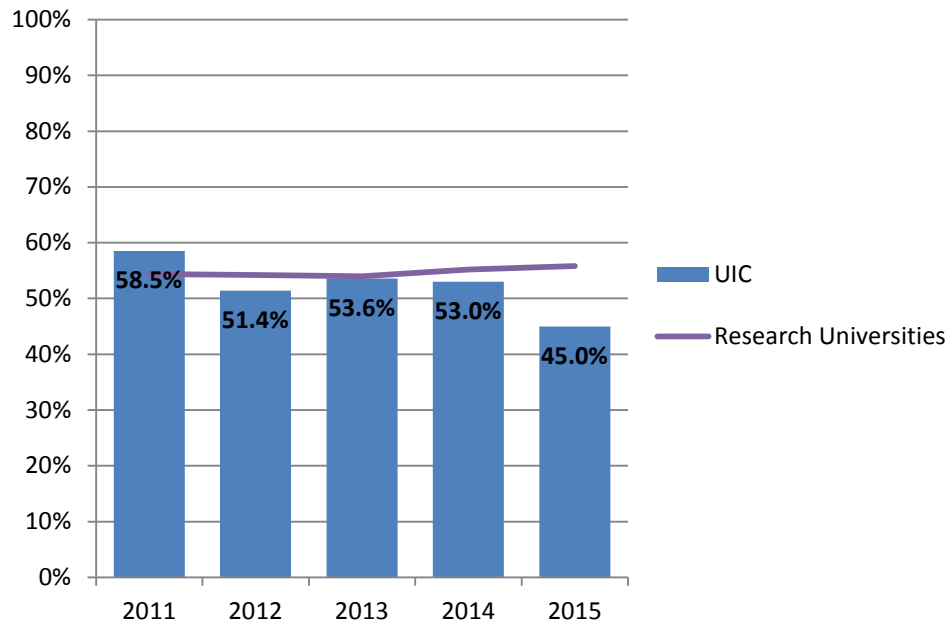
The percent of research doctorate recipients at UIC who have definite commitments for employment or postdoctoral research training is lower than the average for research universities.



Data Source: Institutional Profile from the Survey of Earned Doctorates.

PERCENT DOCTORATES HAVING NO GRADUATE OR UNDERGRADUATE EDUCATION-RELATED DEBT, AY 2011 – AY 2015

The percent of research doctorate recipients at UIC who had no debt related to undergraduate or graduate education is slightly lower than the average for research universities.



Data Source: Institutional Profile from the Survey of Earned Doctorates.