

Reported to the Board of Trustees
May 17, 2018

University of Illinois at Chicago



Performance Metrics

**ADMISSIONS, STUDENT QUALIFICATIONS, AND
TRANSFER ENROLLMENTS UPDATE**

**REPORTED BY:
CHANCELLOR MICHAEL D. AMIRIDIS
MAY 17, 2018**

PEER GROUPS

Peer Group

SUNY, University at Buffalo
University of Alabama at Birmingham
University of Cincinnati
University of Connecticut
University of Louisville
University of South Florida - Tampa
University of Utah
Virginia Commonwealth University

Aspirational Peer Group

Rutgers University
University of Arizona
University of California – Los Angeles
University of California – Irvine
University of Washington



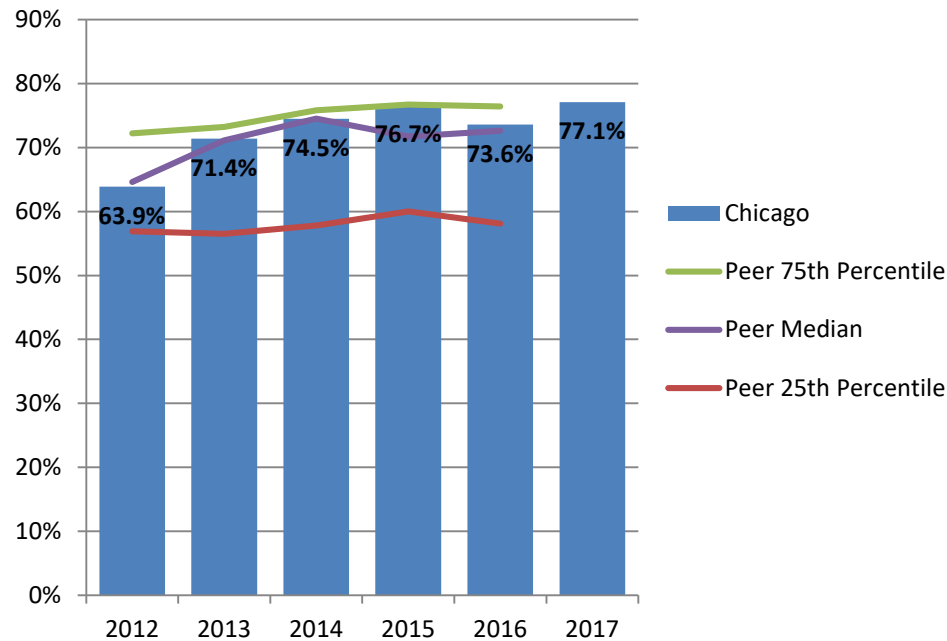
ADMISSIONS



PERCENT FIRST-TIME FRESHMEN APPLICANTS ADMITTED*

FALL 2012 – FALL 2017

The percent of freshmen applicants admitted to UIC remains on par with its peer group median. UIC's admit rate has been rising at a rate similar to peers. The peer group admit rates range from a high (least selective) of 81% to a low (most selective) of 47%.

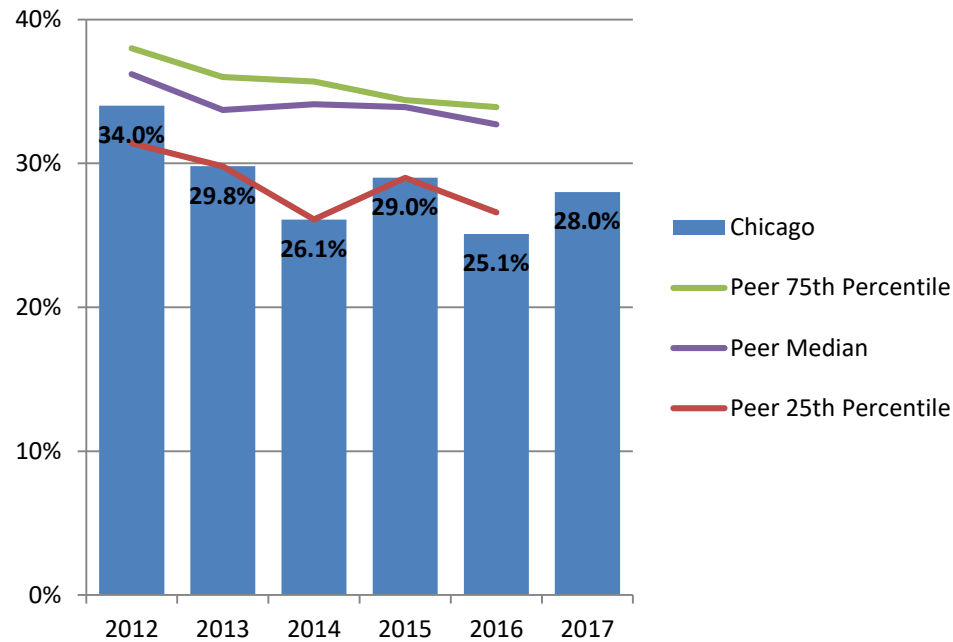


* Percent Admitted = Percent of (total admits divided by total applicants).

PERCENT FIRST-TIME FRESHMEN ADMISSIONS YIELD*

FALL 2012 – FALL 2017

Admissions yield at UIC is lower than the peer group median. UIC's yield rate has ranged between 25% and 30% the last five years. The peer group median was 33% in fall 2016.



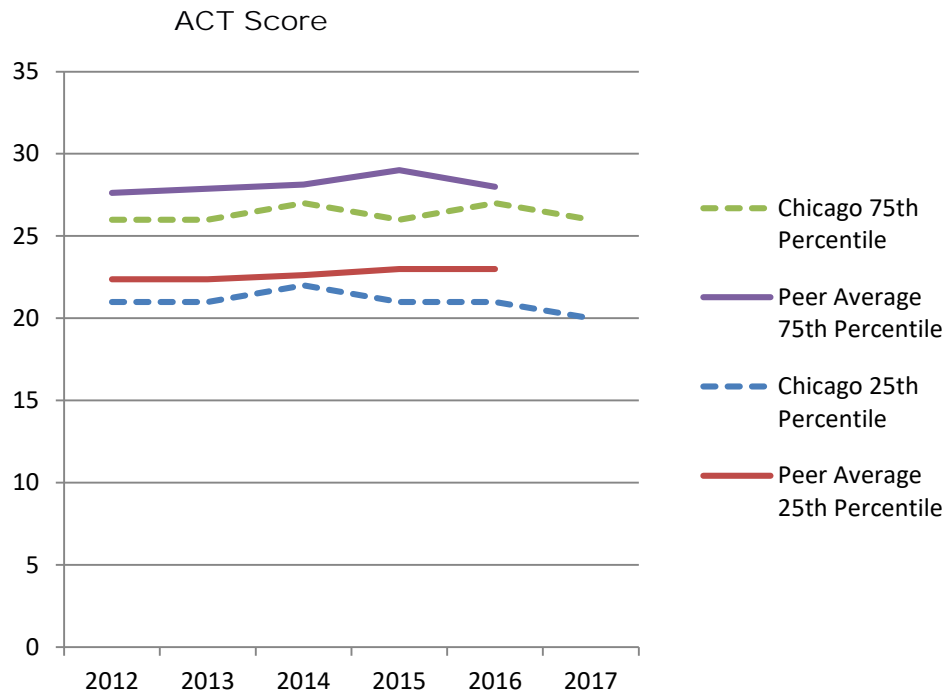
* Admissions Yield = Percent of (total enrolled divided by total admits).

STUDENT QUALIFICATIONS



ENTERING FRESHMEN ACT COMPOSITE SCORES 25TH AND 75TH PERCENTILE FALL 2012 – FALL 2017

Research has shown that ACT is a poor predictor of student success at UIC (a common finding in higher education literature). A commitment to access and diversity has led UIC to consider and adopt other measures of student quality, including high school GPA, Selective Index, high school rank and non-cognitive skills. UIC's 25th percentile and 75th percentile scores are one and two points lower than the peer group (21 vs. 23 for 25th percentile and 27 vs. 28 for 75th percentile).



Note: Fewer students at peer institutions submit ACT scores.



TRANSFER ENROLLMENTS

FIRST-TIME TRANSFERS ENROLLMENT

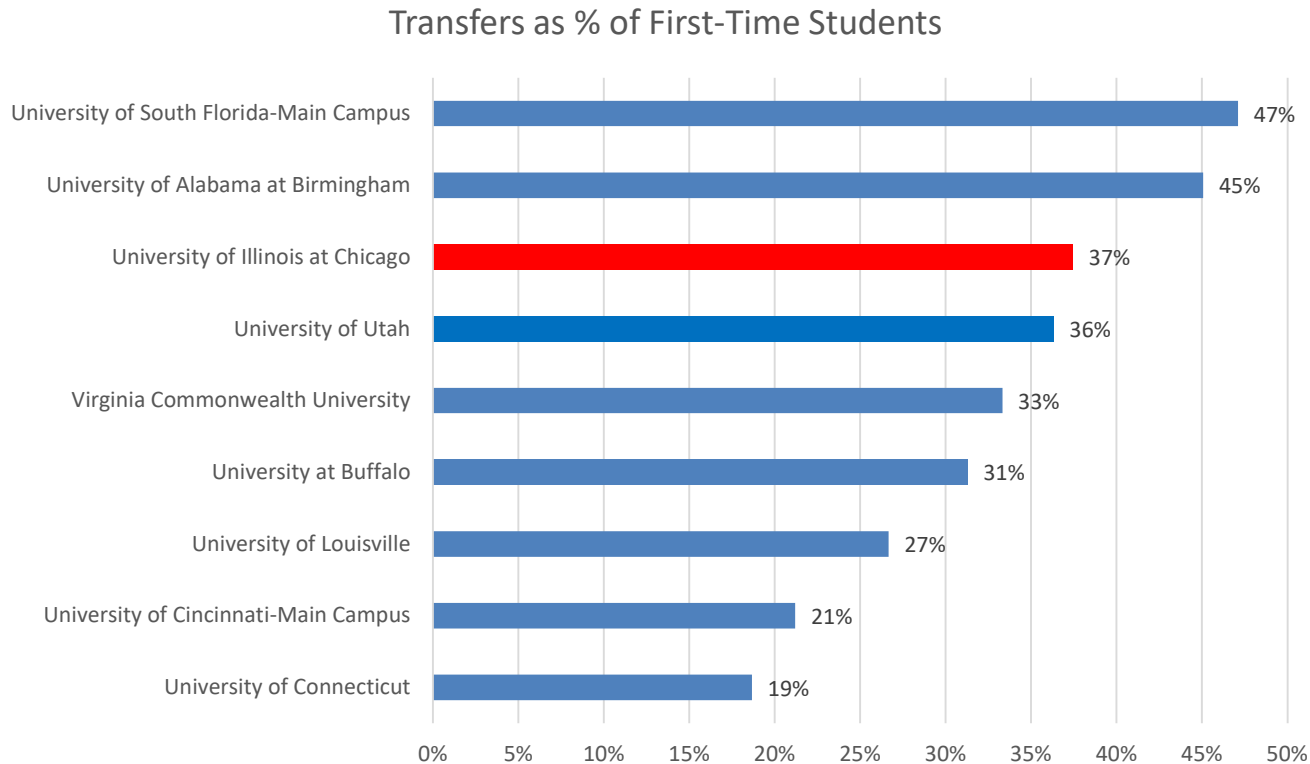
FALL 2012 – FALL 2017

The number of UIC first-time transfer students has grown from 1,452 in 2012 to 1,958 in 2016 and 2,181 in 2017. This is the largest increase of the peer group in both numbers and percentage change.

Institution	2012	2013	2014	2015	2016	2017	2012-16 N Chg	2012-16 % Chg
University at Buffalo	1,917	1,924	1,749	1,881	1,858		(59)	-3.1%
University of Alabama at Birmingham	1,259	1,397	1,449	1,357	1,598		339	26.9%
University of Cincinnati	1,290	1,168	1,165	1,408	1,338		48	3.7%
University of Connecticut	867	785	809	876	874		7	0.8%
University of Louisville	1,172	1,142	1,050	1,001	998		(174)	-14.8%
University of South Florida	3,505	3,355	3,352	3,454	3,571		66	1.9%
University of Utah	2,017	1,841	1,703	1,993	1,893		(124)	-6.1%
Virginia Commonwealth University	2,018	2,093	2,283	2,020	2,068		50	2.5%
Peer Group Median	1,604	1,619	1,576	1,645	1,728		125	7.8%
University of Illinois at Chicago	1,452	1,640	1,718	1,569	1,958	2,181	506	34.8%

FIRST-TIME TRANSFERS AS PERCENTAGE OF FIRST-TIME STUDENTS FALL 2016

In Fall 2016, the percentage of first-time UIC transfer students was 37%, near the peer group median with a wide variation among peers, ranging from 19% to 47%.

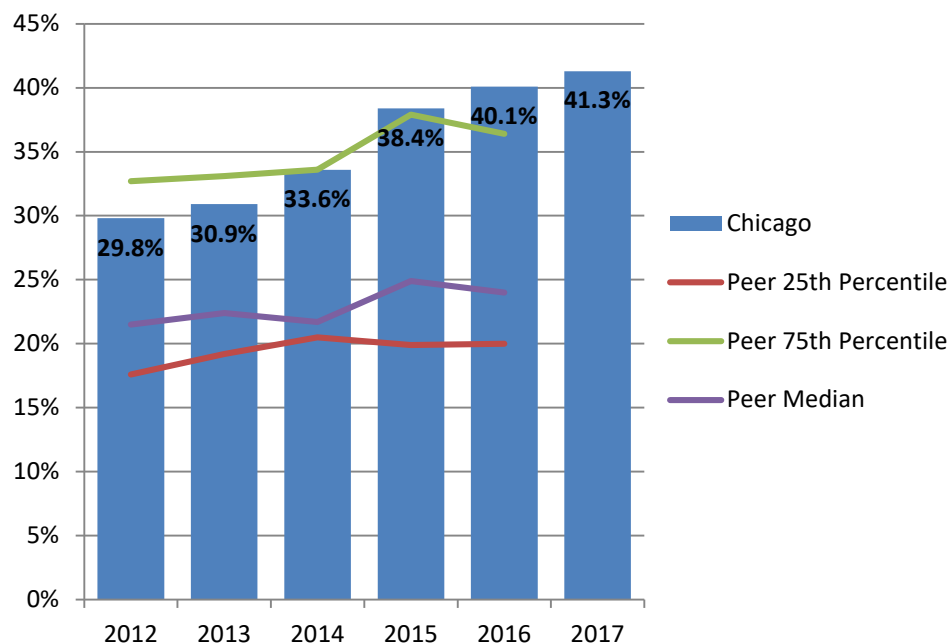


Note: IPEDS data are based on fall only. A significant number of transfer enrollments also occur in the spring semester at UIC.



PERCENT FIRST-TIME TRANSFERS FROM UNDERREPRESENTED* GROUPS FALL 2012 – FALL 2017

The percent of first-time transfers from underrepresented groups at UIC is higher than its peer group median and near the peer group 75th percentile.



* Includes American Indian, Black, Hispanic, Native Hawaiian/Other Pacific Islander, and multi-racial students.

AREAS MEETING OR EXCEEDING EXPECTATIONS

Yield and Diversity of Applicant Pool

- In Fall 2017, UIC had its largest first year applicant pool in its history. Fall 2018 submitted applications set a new record and surpassed the 22,000-application mark, an increase of 15% compared to Fall 2017 year-to-date submissions
- In Fall 2017, underrepresented applicants increased 8%. Compared to year-to-date figures, there is a 19% increase in underrepresented applicants in Fall 2018
- In Fall 2017, underrepresented admits increased 17%. Fall 2018 underrepresented admits increased another 10% based on a year-to-date comparison
- In Fall 2018, 2,875 high-achieving underrepresented students (3.5 high school GPA and higher) earned admission from UIC, an increase of 31% compared to Fall 2017 year-to-date counts
- Fall 2018 Early Action applications and admits have each increased by 26% compared to year-to-date data for Fall 2017.

AREAS MEETING OR EXCEEDING EXPECTATIONS

Pathways to Attract Illinois Students

- Admission Via Excellence Program provides first-year applicants ranked in the top 4% of their class or with a 3.9 unweighted GPA at schools that do not rank, admission to the academic college of their choice.
- Transfer Admission Guarantee (TAG) program established agreements with 10 area community colleges during the 2016-2017 academic year for guaranteed admission to several UIC programs.
- Augmented College Criteria and Evaluation for Student Success (ACCESS) program incorporates an assessment of non-cognitive factors in an interview process for admission.
 - In Fall 2018, the process identified 1,019 students, of which 561 (420 underrepresented) were admitted.

AREAS MEETING OR EXCEEDING EXPECTATIONS

Pathways to Attract Chicago Students

- Partnered with City Colleges of Chicago on STAR Scholars Program
 - Fall 2017, admitted approximately 50 STAR scholars
- Augmented Guaranteed Admission Transfer (GAT) Program with City College of Chicago to include STAR Scholars

AREAS MEETING OR EXCEEDING EXPECTATIONS

UIC is a federally designated Minority Serving Institution

- Designated Asian American Native American Pacific Islander Serving Institution (AANAPISI) in 2010
 - Since 2010, UIC has been awarded 3 federal grants totaling \$5.6 million to support Asian American academic programs and social support services
- Designated Hispanic Serving Institution (HSI) in 2015
 - In 2016, UIC received an HSI Grant to establish L@S Ganas program to improve Latino S.T.E.M. retention and graduation
 - In AY2018, L@S GANAS supported 37 students through the Research Fellowship, 60 students through peer mentoring (30 mentoring pairs/dyads), and 11 peer leaders for study groups in STEM courses



AREAS FOR IMPROVEMENT

- Maintain comparable yield rate in a highly competitive market
- Increase yield of underrepresented students, especially African American
- Increase geographic diversity
- Expand engagement throughout the Midwest, Northeast, Northwest, Southwest, and Southcentral regions of the United States
- Increase partnerships with community-based organizations, both within Illinois and nationally, to build meaningful relationships with UIC constituency

STRATEGY TO ADDRESS AREAS FOR IMPROVEMENT

Increase Yield Rate:

- Fully implement the Admission Via Excellence Top 4% Program
- Pilot expansion of the Admission Via Excellence Program to the top 10% with the College of Business
- Fully implement the STAR Scholarship Program
- Continue yield events (FIRESTARTER and IGNITE), and encourage increased participation:
 - Open House hosted over 8,000 guests in September 2017
 - Ignite: Admitted Student Day hosted over 3,000 guests in April 2018
 - Conducted over 130 visits to Chicago Public Schools

STRATEGY TO ADDRESS AREAS FOR IMPROVEMENT

Increase Geographic Diversity:

- Increase out-of-state recruitment events and outreach
 - In Fall 2017, freshmen were admitted from 29 states and 4 US territories; from 88 countries other than the US
 - In Fall 2017, transfer students were admitted from 33 states and 1 US territory; from 13 countries other than the US
- Increase international recruitment efforts through the International Accelerator Program/Shorelight Education Agreement

STRATEGY TO ADDRESS AREAS FOR IMPROVEMENT

Increase Geographic Diversity:

- Continue to expand the Chicago Grant to enhance out-of-state recruitment
 - In Fall 2018, there are 20% plus Chicago Grant admits than the year to date comparison
- Continue to hold Illinois High School and Community College recruitment events
 - Held over 1,100 events in Illinois for the Fall 2018 cycle

Build enrollment capacity in high demand degree programs requiring:

- New space for classroom and housing
- Faculty and support services (advising)

STRATEGY TO ADDRESS AREAS FOR IMPROVEMENT

Capital Improvements:

- New student housing
- Critical deferred maintenance
- Upgrade classrooms, labs and other facilities
- Academic and Residential Complex, an 83,000 sq. ft. residential space with 550-bed occupancy and 51,000 sq. ft. of academic space, to open on August 2019.
- Engineering Innovation Building, a 50,000 square-foot instructional space, research labs and staff offices, will open Fall 2019. It will also include the university's first high-bay structural research lab where researchers can perform tests on large-scale structures.