

# **University of Illinois at Chicago**

## **Dashboard Indicators**

**TUITION, FEES AND FINANCIAL AID UPDATE**

**PRESENTED BY**

**CHANCELLOR MICHAEL D. AMIRIDIS**

**JANUARY 21, 2016**



# Peer Groups



**University of Illinois at Chicago**

SUNY, University at Buffalo

University of Alabama at Birmingham

University of Cincinnati

University of Connecticut

University of Louisville

University of South Florida - Tampa

University of Utah

Virginia Commonwealth University

# Aspiration Groups



**University of Illinois at Chicago**

Rutgers University

University of Arizona

University of California – Los Angeles

University of California – Irvine

University of Washington

# Tuition and Financial Aid

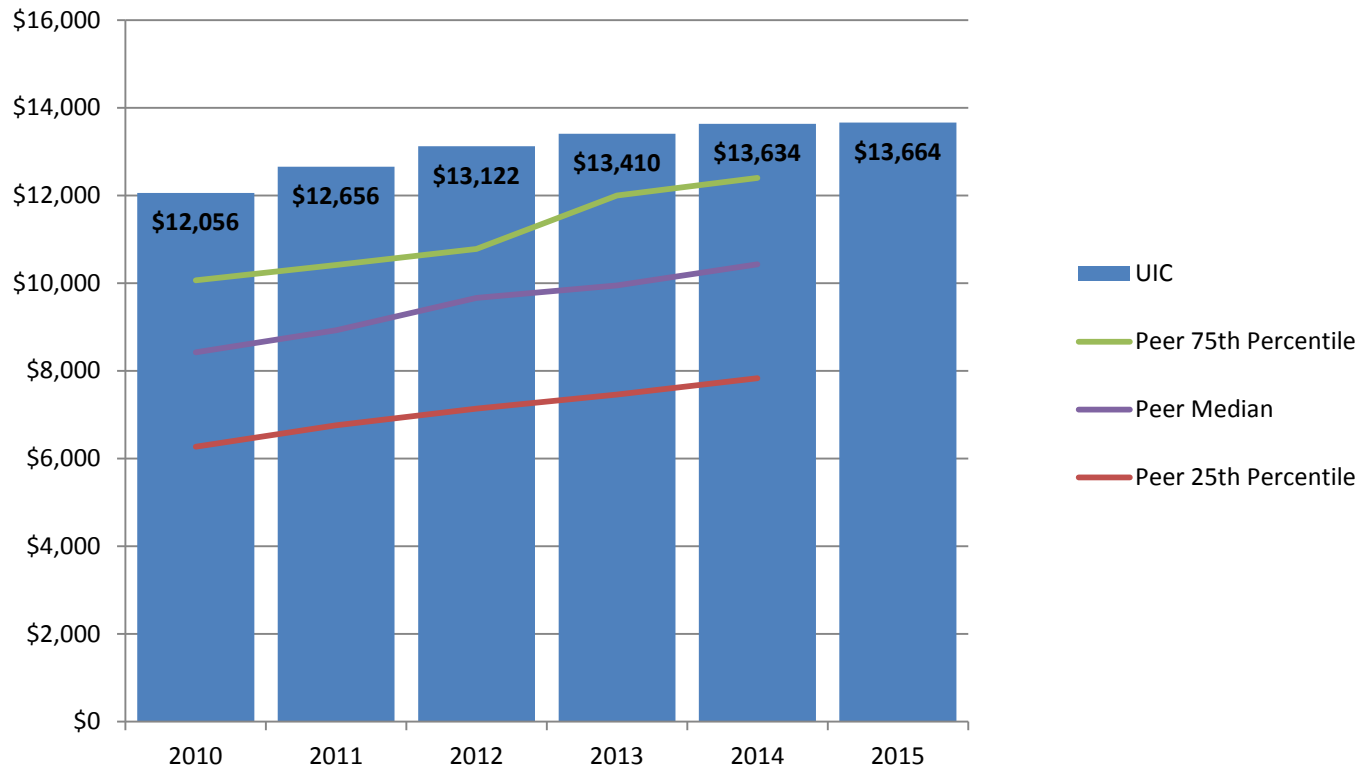


# Undergraduate In-State Tuition and Fees

*Per Academic Year*

## AY 2010 – AY 2015

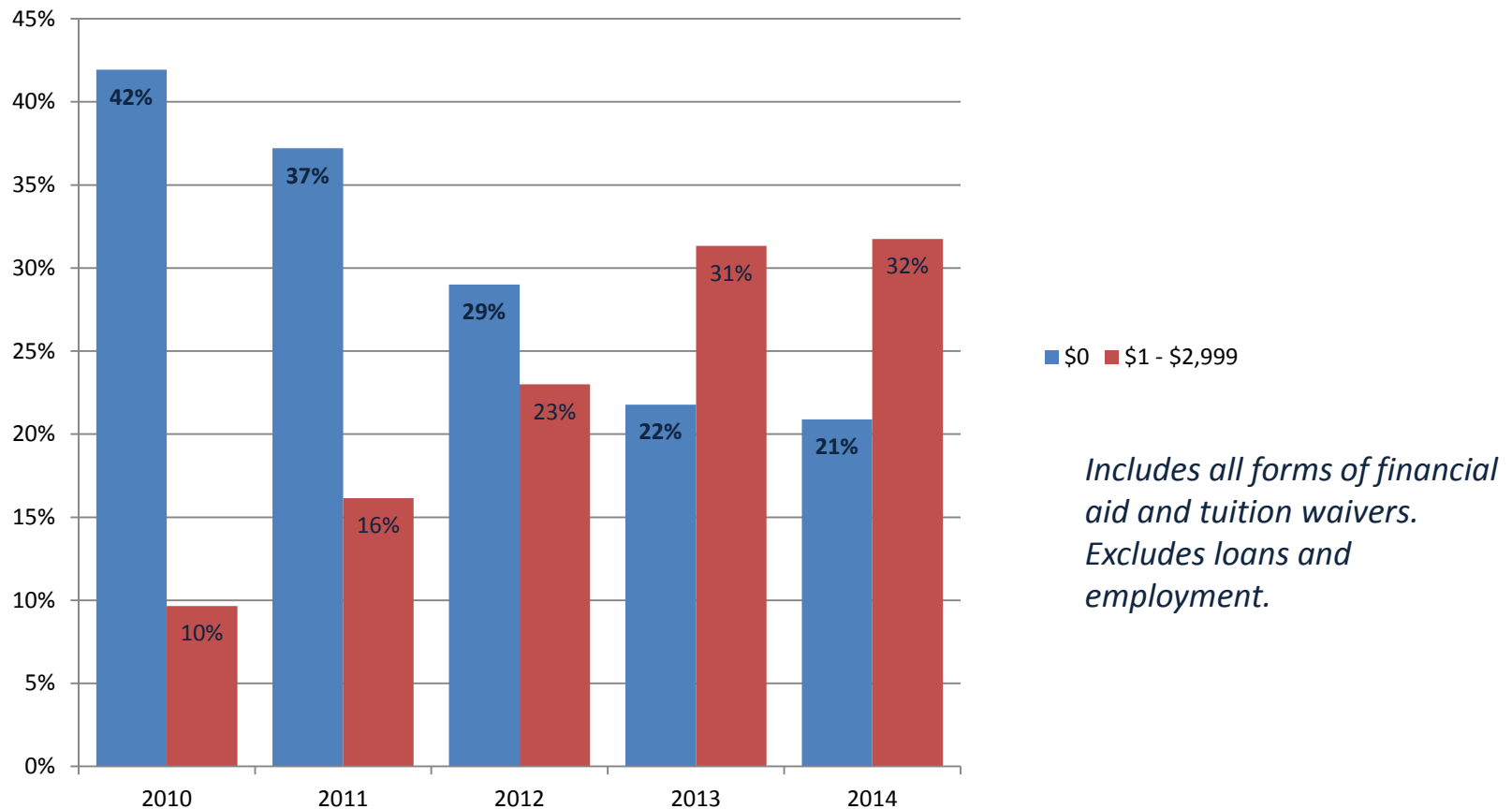
**UIC's published undergraduate tuition and fee rates are higher than our peer group median.**



# % Full-Time Undergraduate Students Paying Less than \$3,000 Per Semester

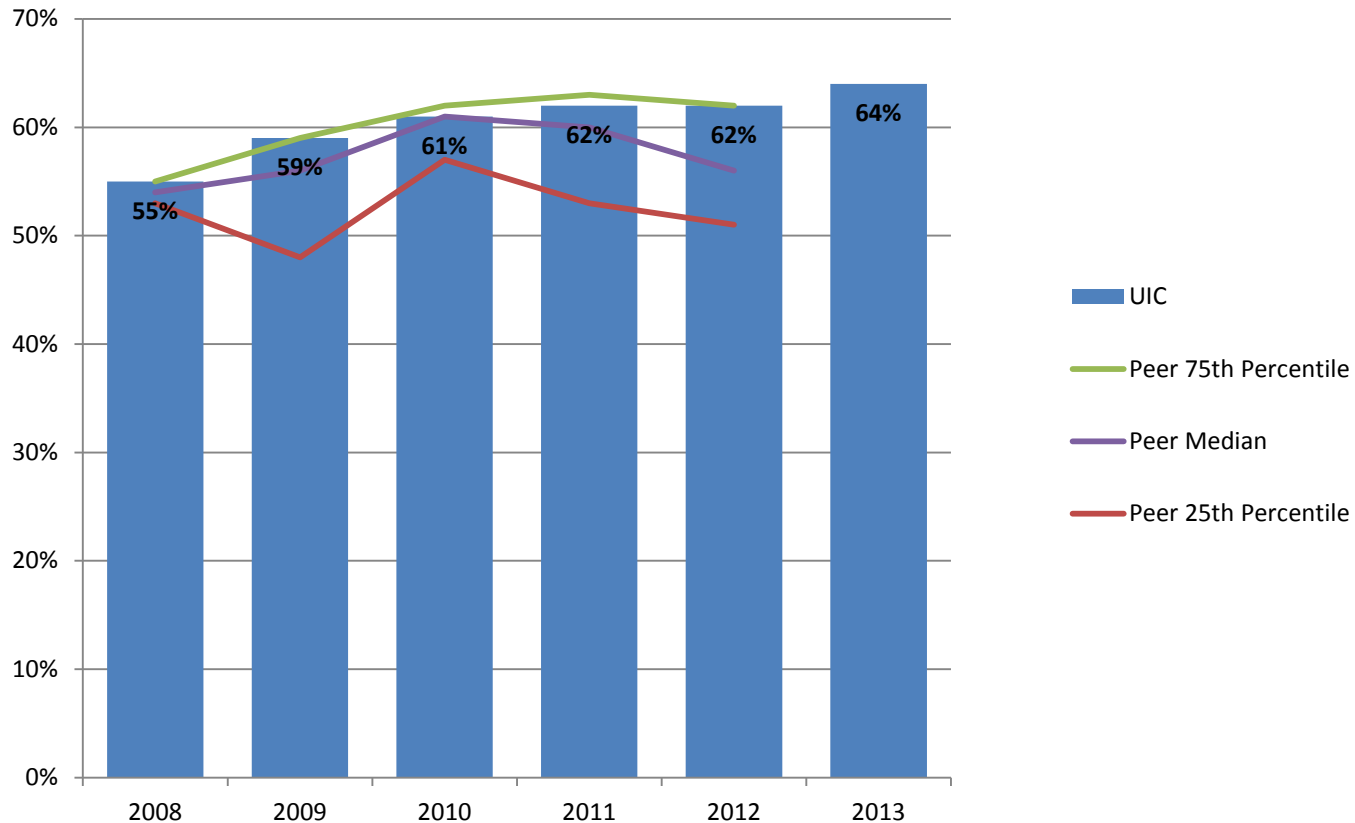
## Fall 2010 – Fall 2014

About one-half of undergraduates at the University of Illinois at Chicago pay less than \$3,000 per semester for tuition.



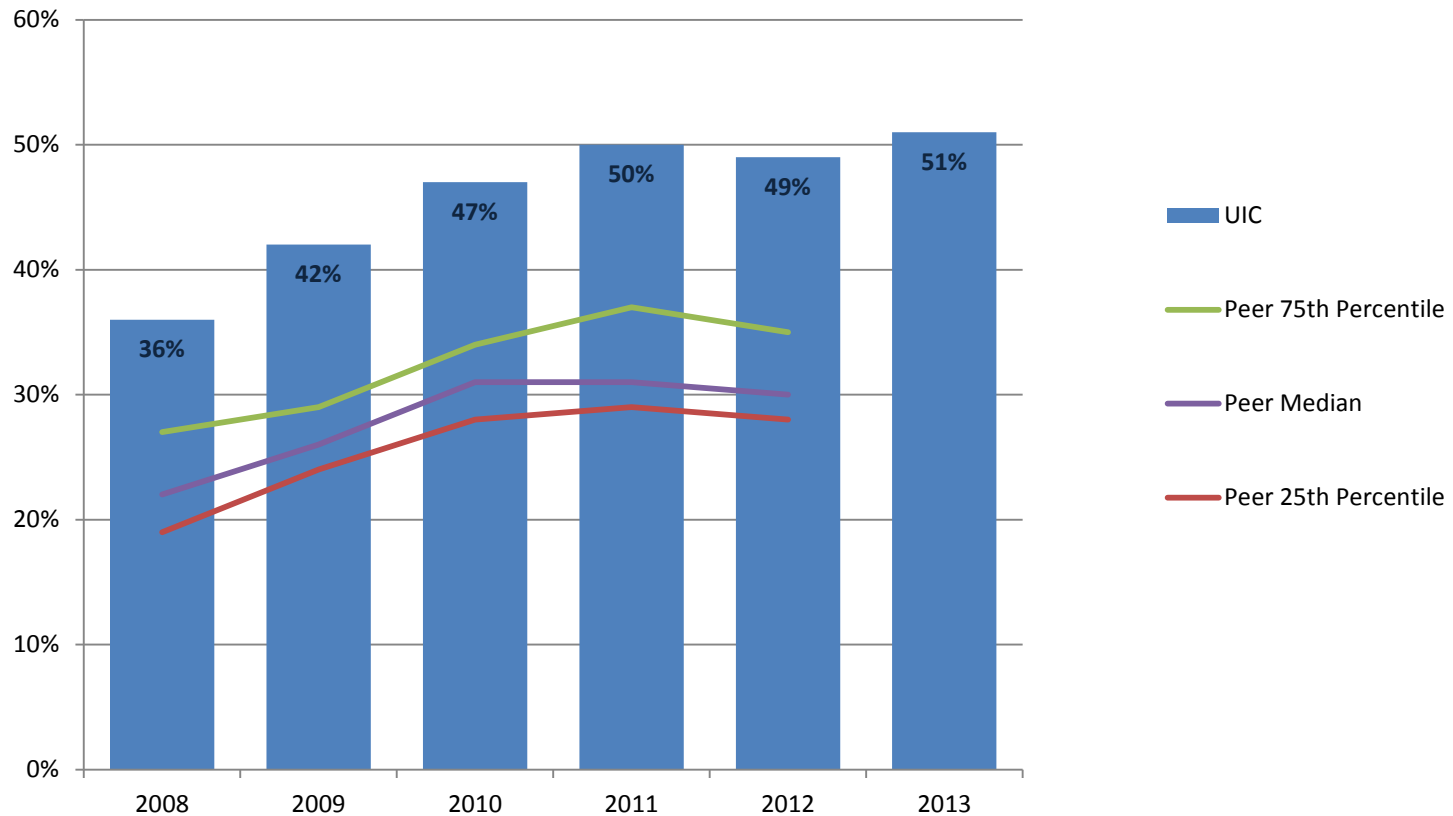
# % of Undergraduate Students All Types of Financial Aid AY 2008 – AY 2013

62% of UIC students receive some sort of financial aid (2<sup>nd</sup> highest among peers) compared to 75% at the University of Louisville (highest) and 49% at the University of Utah and Virginia Commonwealth (3<sup>rd</sup> and 4<sup>th</sup> highest among peers).



# % Undergraduate Students Receiving Pell Grants AY 2008 – AY 2013

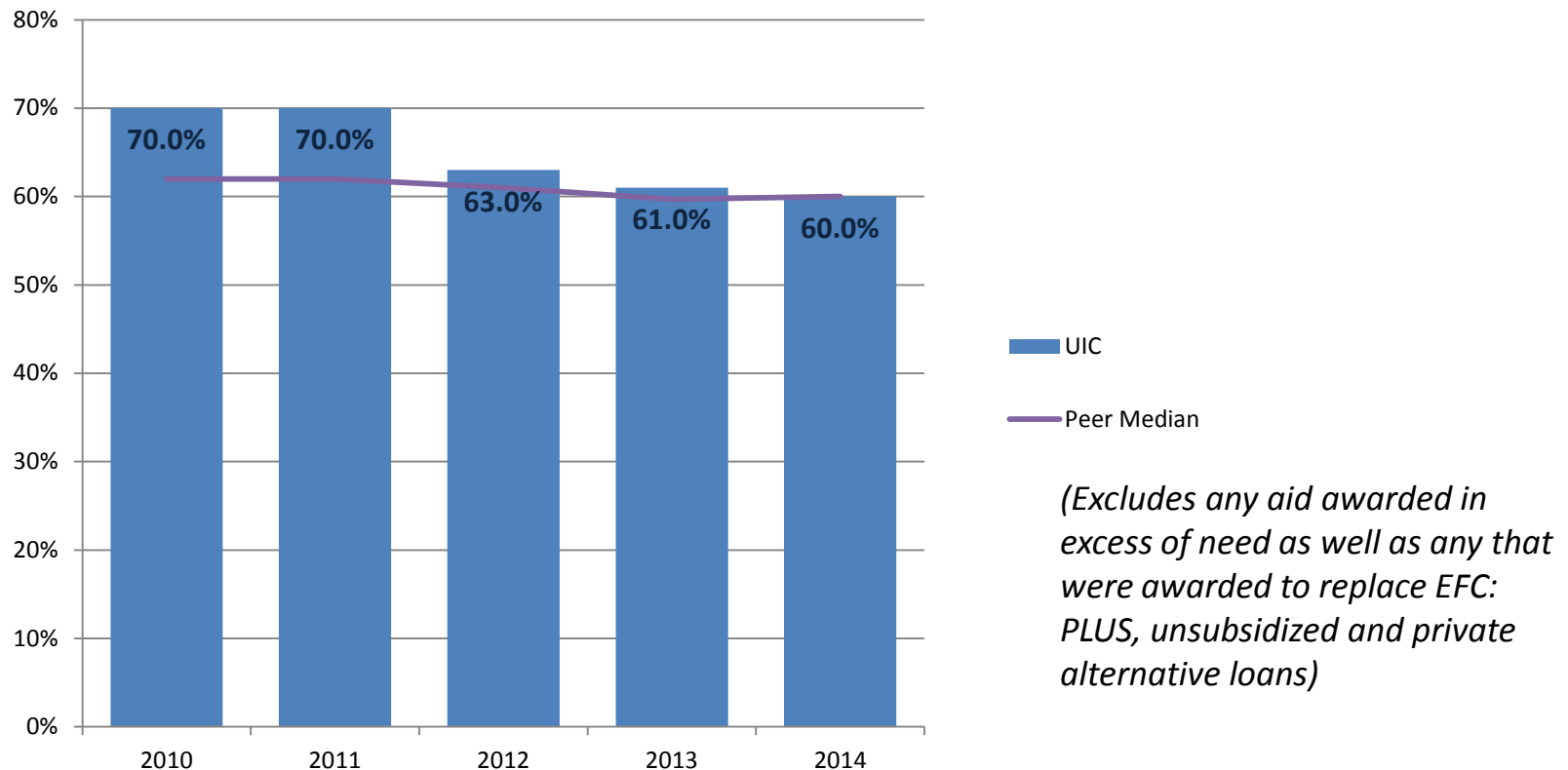
UIC has the highest percentage of Pell grant recipients among its peers, with UConn having the lowest (21%).





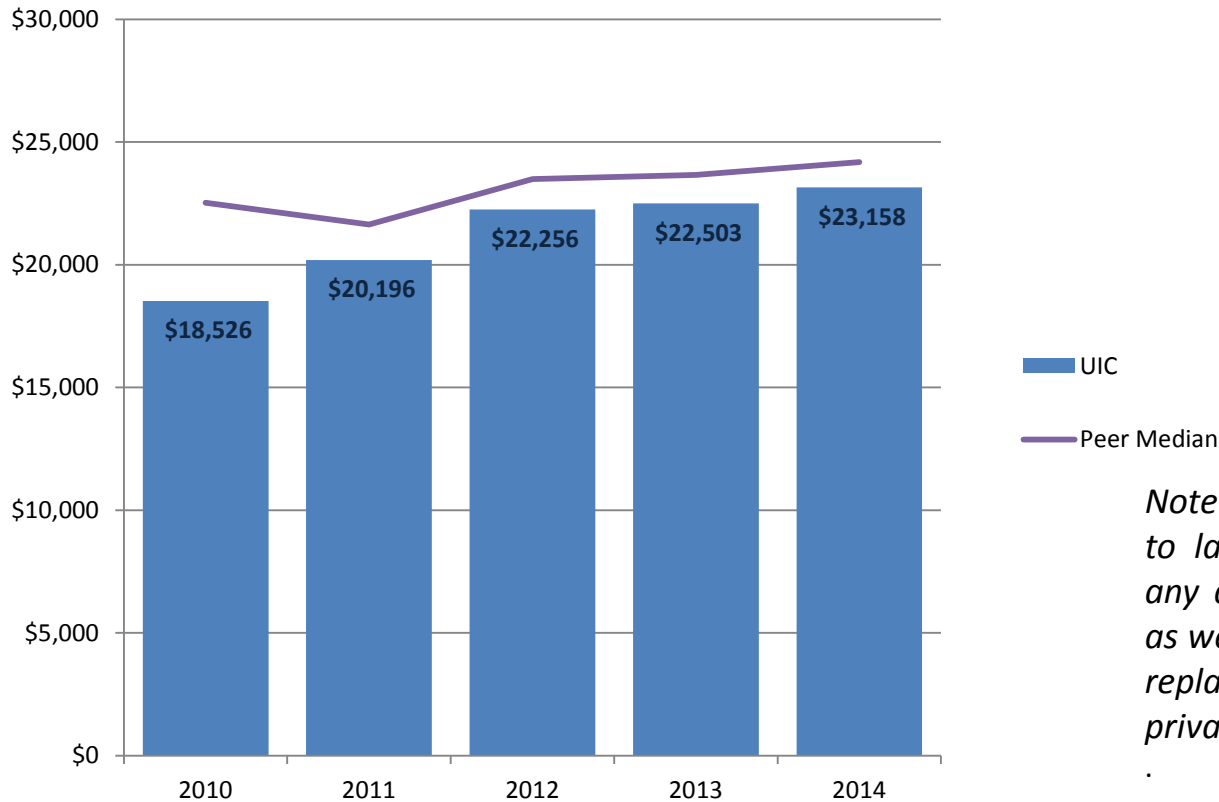
# % of Need Met for FT Undergraduates Awarded Any Need-Based Aid AY 2010 – AY 2014

UIC students have a similar percentage of their financial need met when compared to the peer group median. UAB (47%) and University of Cincinnati (43%) students have more unmet need.



# Average Cumulative Principal Borrowed Per Undergraduate Student AY 2010 – AY 2014

**UIC students borrow less on average than students at peer schools. This correlates with the previous slide: students at institutions with higher unmet need borrow more.**



*Note: Excludes SUNY at Buffalo due to lack of available data Excludes any aid awarded in excess of need as well as any that were awarded to replace EFC: PLUS, unsubsidized and private alternative loans)*

# Accomplishments



- **Total Enrollment**

- Set new enrollment record of 29,048; an increase of 1,079
- Largest student population in the Chicago-area
- Undergraduate students increased by 804; an increase of 4.8%
- Graduate students increased by 202; an increase of 2.6%

- **New Freshman**

- An increased of 455 to 3,485; 15% more first time students

- **Pell Eligible**

- 51%, or 8,948 undergraduate students are Pell eligible
- Increase of 444 Pell eligible students

# Accomplishments



- Completed Phase 1 Implementation of UIC's On-line Scholarship Program (SnAP!)
- Formed the first cohort of **President's Award Program (PAP) STEM Initiative** students, with the goal of increasing the number of underrepresented students earning undergraduate degrees in science, technology, engineering, and mathematics (STEM)

# Areas of Strength



## Student Debt

- \$23,158 is the average per-undergraduate student debt burden (national average for public and private nonprofit colleges is \$28,950)
- 50% of undergraduate students pay less than \$3,000 per semester for tuition and fees
- 21% of undergraduate students pay 0% of tuition and fees, down from over 30% in previous years

# Areas of Strength



## 3-Year Cohort Default Rates

- Default rates at UIC have decreased over the past 3 years:
  - UIC 3.2%
  - Illinois Public Universities 5.6%
  - National Public Average, 4 year 7.6%

# Areas of Improvement



- Increase enrollment and revenue in Summer School to improve graduation and retention rates
- Increase enrollment of full paying out-of-state undergraduate students to broaden geographic diversity and strengthen the revenue base
- Seek additional merit scholarship funding to enhance recruitment and prioritize development efforts

# Strategy to Address Areas for Improvements



## Summer Session

- Summer 2016 tuition and fees will be changed to a per credit hour pricing model, with a significant discount for students taking 1 – 3 credit hours
- New summer tuition and fee structure, combined with increased offering of “bottleneck” courses, will increase demand and positively impact graduation rates
- Implement Summer Tuition Assistance Program for graduating members of 4 and 6 year cohorts to positively impact graduation rates



# Strategy to Address Areas for Improvements



## Establish 3 Non-Resident Tuition Rates

- 1) US Non-Resident: \$11,720 per semester, no change to current rate
- 2) International: \$12,720 per semester, increase of \$1,000 over domestic non-resident rate
- 3) UIC Grant Rate: \$7,938 per semester, 50% higher than IL resident rate; available to US residents who meet certain academic and skill qualifications

# Areas to Watch



## **Institutional Financial Aid Policy**

- Optimize institutionally funded financial aid by linking awards to student outcomes and streamline scholarship award process
- Evaluate financial aid policies and recommend cost saving changes that have minimal impact on access and diversity

## **MAP Funding**

- Impact of State reimbursement of MAP grants for FY2016 (\$32 million)

## **Enrollment, Retention and Graduation**

- Increase enrollment of underrepresented students, especially African American
- Impact of Student Success Initiatives on Graduation and Retention Rates

