

# University of Illinois at Chicago



## Dashboard Indicators

ENROLLMENTS, GRADUATION AND RETENTION RATES,  
DEGREES AWARDED, AND GRADUATE EDUCATION UPDATES BY:  
UNIVERSITY OFFICE FOR PLANNING AND BUDGETING

OCTOBER 5, 2016

PRESENTED BY:  
CHANCELLOR MICHAEL D. AMIRIDIS  
NOVEMBER 10, 2016

# PEER GROUPS

## **Peer Group**

SUNY, University at Buffalo  
University of Alabama at Birmingham  
University of Cincinnati  
University of Connecticut  
University of Louisville  
University of South Florida - Tampa  
University of Utah  
Virginia Commonwealth University

## **Aspirational Peer Group**

Rutgers University  
University of Arizona  
University of California – Los Angeles  
University of California – Irvine  
University of Washington

# ENROLLMENTS



# AREAS OF EXCELLENCE

- Ranked in top 200 in *The Times Higher Education World University Ranking*, among more than 1,300 international institutions
- Fall 2016 census of 29,120 students was highest 10th day enrollment
  - Undergraduate enrollment increased by 2.2% (17,959) from last year
  - New undergraduate transfers increased by 24.8% (1,958) from last year
- Most diverse university among its peers, with 42% of undergraduates from underrepresented groups and 33% of total student body
- 2<sup>nd</sup> among the 115 top research universities (Carnegie classification) on percent of undergraduates that are Pell grant recipients (56%)
- Earned the 2016 Higher Education Excellence in Diversity Award from INSIGHT into Diversity Magazine, the oldest and largest diversity focused publication

# AREAS OF EXCELLENCE

- **Increased participation in recruitment and outreach events, with over 1,100 recruitment events held**
- **Increased Undergraduate applications by 13%, with underrepresented application increase of 18%**
- **Created “Afterburn”, a virtual admitted student program conducted as a follow-up to IGNITE, the on-campus early action yield event**
- **Successfully launched Transfer Admission Guarantee (TAG) Agreements with 9 area community colleges**
- **Dedicated Admission staff to support Chicago Star Scholar Program, a partnership with City College of Chicago through the Guaranteed Admission Transfer (GAT) program**
- **Launched strategic outreach and communication initiatives**
  - **UIC Transfer Assistance Center, September 2015**
  - **UIC International Recruitment Unit**
  - **Admissions Marketing Unit with media center**



# STRATEGIES FOR SUCCESS

- **Increased marketing and communication efforts to applicants and admitted students**
  - Updated publications and recruitment materials, including development of TAG/GAT brochures and web presence
  - Developed Chicago Regional Marketing campaign Fall 2015 and Spring 2016
  - Customized prospective student viewbook to be audience specific
  - Transmitted +1.5 million communications through Banner Relationship Management, and completed over 13,500 tele-counseling sessions
  - Hosted 25,000 visitors at the UIC Visitor Center for daily information sessions, transfer information sessions and campus tours
  - Held two bilingual (Spanish) Saturday Admitted Student Sessions and tours, complimenting LARES sponsored events
- **Launched strategic outreach and communication initiatives**
  - UIC Transfer Assistance Center
  - UIC International Recruitment Unit
  - Admissions Marketing Unit with media center



# STRATEGIES FOR SUCCESS

- **Continue the UIC Merit Tuition Rate (Chicago Grant), program enrolled 132 recipients in Fall 2016. Out-of-state student enrollment increased 23% (168 to 219) from 2013 to 2016**
- **Continue and expand “Avenue via Excellence” program to automatically admit Illinois residents in the top 4% of graduating class. Program was piloted for Fall 2016 with 45 enrolled students**
- **Target 30 Illinois high schools historically known for high number of well-qualified African American Applicants**
- **Admit ACCESS program (augmented admission review) pilot students, Fall 2017**
- **Continue membership in "I'm First" college search engine for first generation college students**
- **Established new member in College Greenlight for first generation students**

# UIC and Peer Institutions Fall Term Enrollment

## Fall 2010 – Fall 2016

Institution	All Student Total						Undergraduate						Graduate and Professional					
	2010	2011	2012	2013	2014	2015	2010	2011	2012	2013	2014	2015	2010	2011	2012	2013	2014	2015
<b>University of Illinois at Chicago</b>	<b>27,850</b>	<b>28,091</b>	<b>27,875</b>	<b>28,038</b>	<b>27,969</b>	<b>29,048</b>	<b>16,806</b>	<b>16,925</b>	<b>16,678</b>	<b>16,671</b>	<b>16,718</b>	<b>17,575</b>	<b>11,044</b>	<b>11,166</b>	<b>11,197</b>	<b>11,367</b>	<b>11,251</b>	<b>11,473</b>
SUNY, University at Buffalo	29,117	28,849	28,952	29,850	29,995		19,397	19,334	19,514	19,831	19,882		9,720	9,515	9,438	10,019	10,113	
University of Alabama at Birmingham	17,543	17,575	17,999	18,568	18,698		11,028	11,128	11,291	11,502	11,679		6,515	6,447	6,708	7,066	7,019	
University of Cincinnati	32,283	33,329	33,347	34,379	35,313		22,449	22,893	23,096	23,706	24,300		9,834	10,436	10,251	10,673	11,013	
University of Connecticut	25,498	25,868	25,483	25,911	26,541		17,345	17,815	17,528	18,032	18,395		8,153	8,053	7,955	7,879	8,146	
University of Louisville	21,234	21,152	21,239	21,444	21,561		15,644	15,596	15,724	15,954	15,961		5,590	5,556	5,515	5,490	5,600	
University of South Florida - Tampa	40,431	39,596	41,116	41,428	41,938		30,914	29,975	31,125	31,100	31,067		9,517	9,621	9,991	10,328	10,871	
University of Utah	30,819	31,660	32,388	32,077	31,515		23,371	24,297	24,840	24,492	23,907		7,448	7,363	7,548	7,585	7,608	
Virginia Commonwealth University	32,027	31,627	31,445	30,974	30,848		23,217	23,498	23,661	23,356	23,661		8,810	8,129	7,784	7,618	7,187	

### UIC Fall 2016 Total Enrollments

All Student Total: 29,120

Undergraduate: 17,959

Graduate and Professional: 11,161

Data Source: IPEDS Data Center. Includes on- and off-campus enrollments.





# UIC and Peer Institutions First-Time Freshmen Enrollment Fall 2010 – Fall 2016

	2010	2011	2012	2013	2014	2015
<b>University of Illinois at Chicago</b>	<b>3,204</b>	<b>3,115</b>	<b>3,123</b>	<b>3,104</b>	<b>3,030</b>	<b>3,485</b>
SUNY, University at Buffalo	3,393	3,255	3,647	3,653	3,517	
University of Alabama at Birmingham	1,571	1,606	1,676	1,773	1,748	
University of Cincinnati	3,936	4,300	4,160	4,486	4,618	
University of Connecticut	3,339	3,327	3,114	3,755	3,588	
University of Louisville	2,562	2,569	2,705	2,855	2,887	
University of South Florida - Tampa	4,430	3,378	3,750	3,736	4,116	
University of Utah	3,110	3,268	3,494	3,124	3,151	
Virginia Commonwealth University	3,555	3,742	3,554	3,526	3,531	

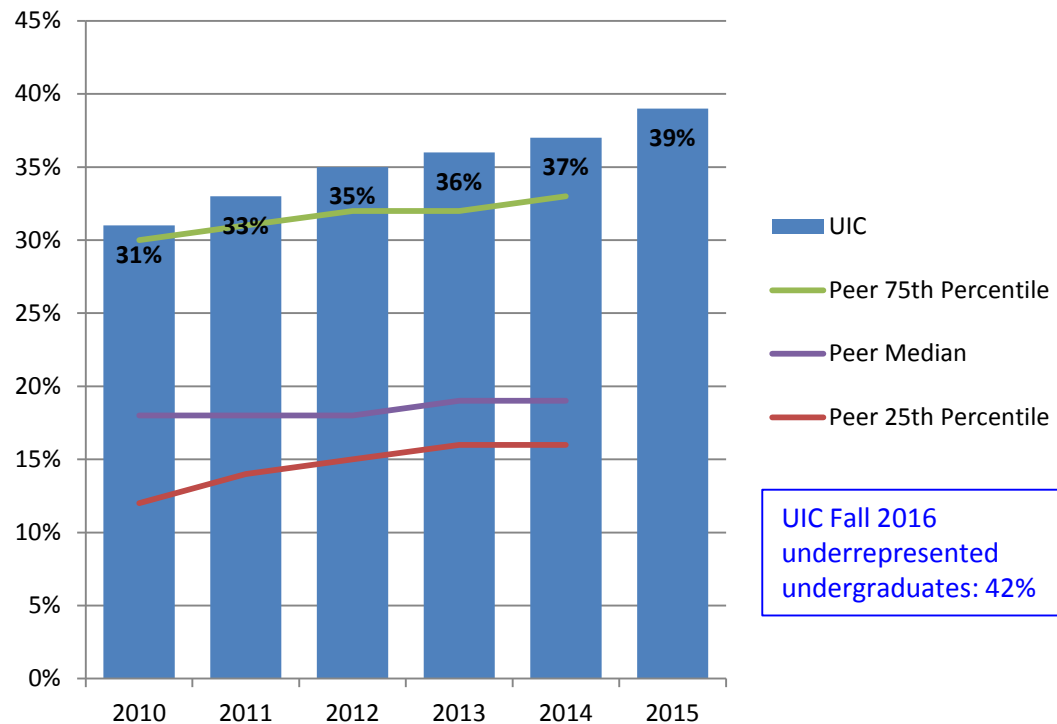
UIC Fall 2016 first-time freshmen: 3,307

Data Source: IPEDS Data Center. Includes on- and off-campus enrollments.



# PERCENT ENROLLED UNDERGRADUATE STUDENTS FROM UNDERREPRESENTED\* GROUPS, FALL 2010 – FALL 2016

The percent of undergraduate students from underrepresented groups at UIC is the highest among its peer group and double the peer median.

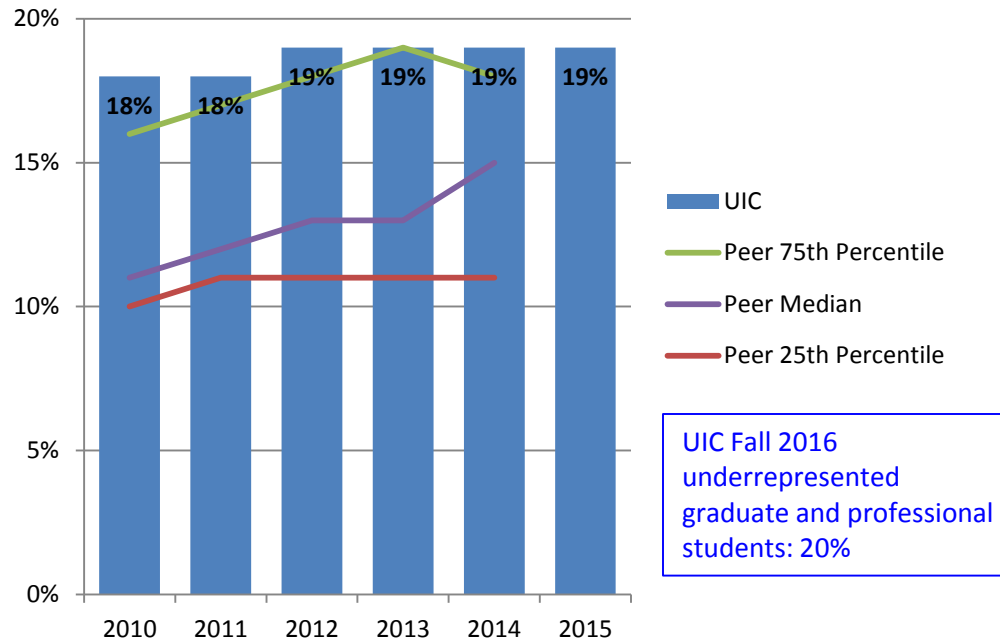


\* Includes Black, Hispanic, American Indian, Native Hawaiian/Other Pacific Islander, and multi-racial students.



# PERCENT ENROLLED GRADUATE AND PROFESSIONAL STUDENTS FROM UNDERREPRESENTED\* GROUPS, FALL 2010 – FALL 2016

The percent of graduate and professional students from underrepresented groups at UIC is second highest among its peer group.



\* Includes Black, Hispanic, American Indian, Native Hawaiian/Other Pacific Islander, and multi-racial students.



# GRADUATION AND RETENTION RATES

# CURRENT TRENDS

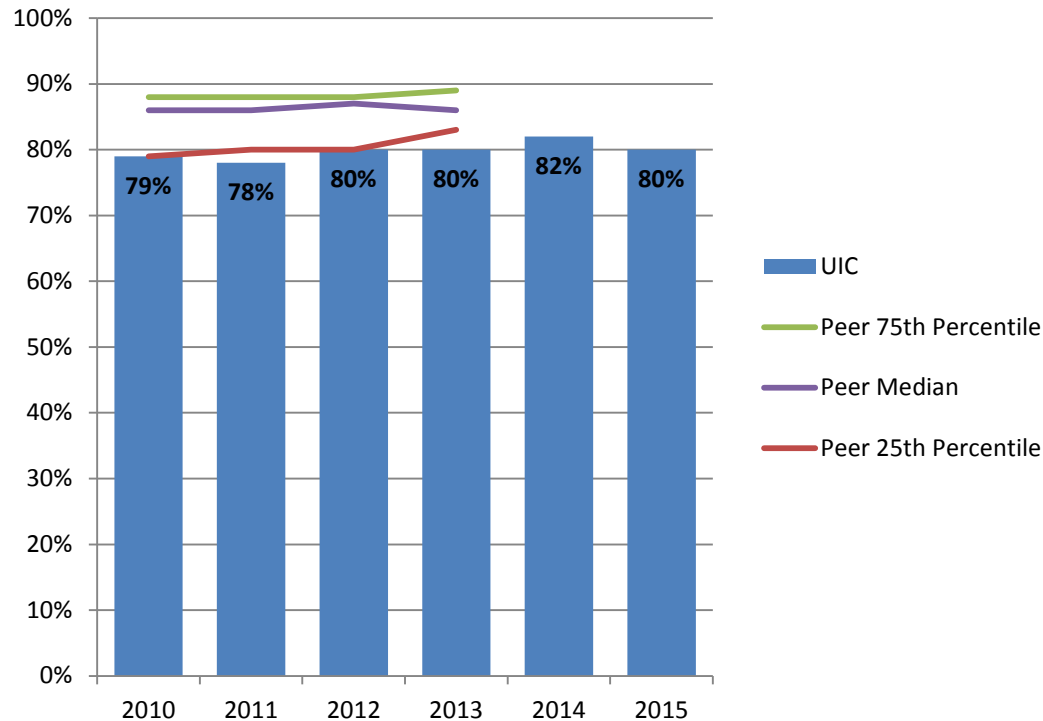
- **One-year retention rate is 80% for the Fall 2015 freshmen entering class**
  - **Underrepresented student groups one-year retention rate is 75%**
- **Six-year graduation rate is 58% for the Fall 2010 freshmen entering class, which is within the range for the last five entering classes (Fall 2006 through Fall 2010 ranged from 57% to 60%)**
- **Five-year graduation rate for Fall 2011 transfers is 76%, higher than the fall 2010 cohort (75%)**

# STRATEGIES FOR SUCCESS

- Provide more opportunities for undergraduate research and other high impact practices
- Continue implementation of first-year Student Success Initiatives
- Implement recommendations of the UIC Enrollment Strategic Plan, i.e.:
  - Expansion of online bachelor's degree completion programs beyond existing online bachelor's degree completion programs
  - Offer bachelor's degree completion programs during evenings/weekends and in blended delivery models
  - Leverage technology to offer high-demand courses via online delivery during summer or winter session and/or at capacity general education courses online and during evening/weekends
  - Utilize program specific articulation agreements and partnerships to enable seamless transition from community college associate degree programs to bachelor's degree completion programs

# FRESHMAN TO SOPHOMORE ONE-YEAR RETENTION RATES 2010 – 2015 COHORTS

The one-year retention rate at UIC is below the 25<sup>th</sup> percentile of its peer group.

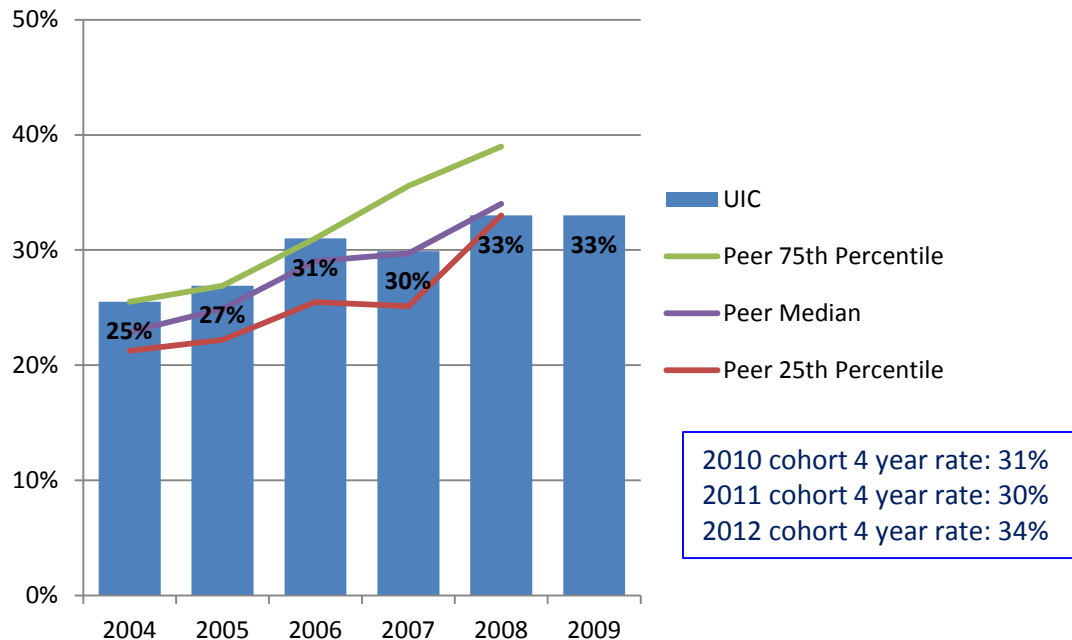


\* Year represent year of entering cohort (e.g., 2015 is fall 2015 entering freshmen returning in fall 2016).



# FIRST-TIME FRESHMEN FOUR-YEAR GRADUATION RATES 2004 – 2009 COHORTS

The four year graduation rate at UIC is near the peer group median. Two peer group members are outliers with rates that are much higher than the rest of the peer group. They are the University of Connecticut (67%) and the University at Buffalo (53%). All other peers have rates below 40%.



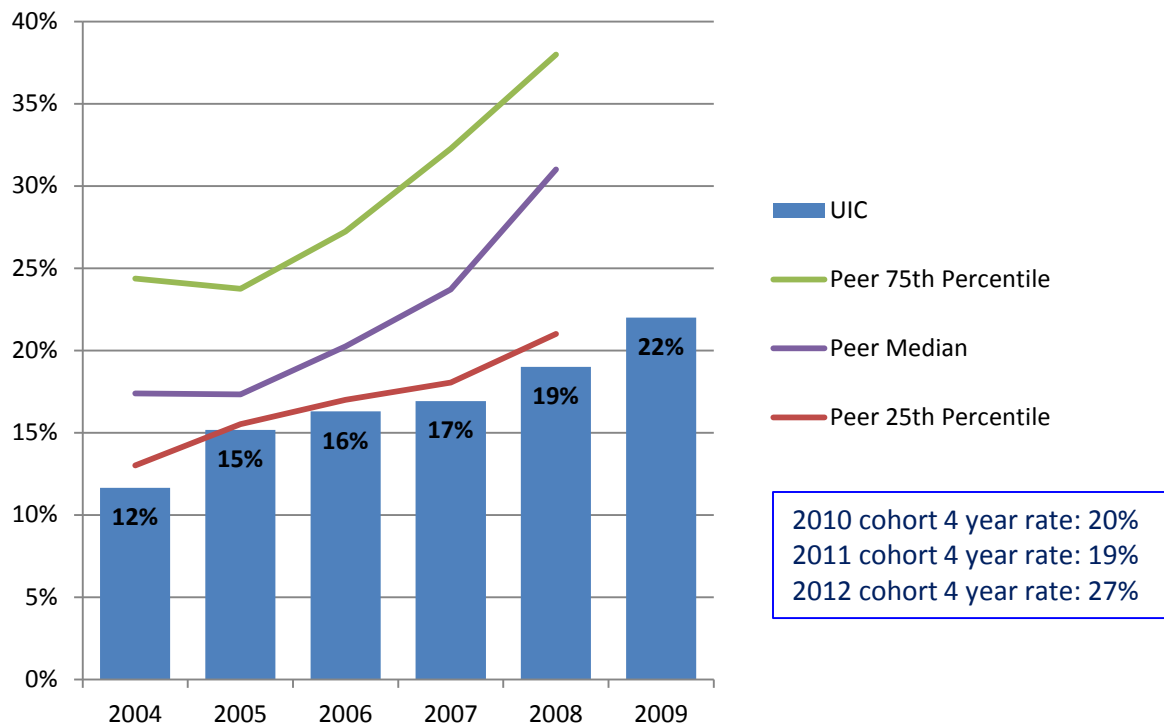
\* Year represent year of entering cohort (e.g., 2009 is fall 2009 entering freshmen graduating by summer 2013).





# PERCENT FIRST-TIME FRESHMEN FROM UNDERREPRESENTED\* GROUPS FOUR-YEAR GRADUATION RATES, 2004 – 2009 COHORTS

The four year graduation rate of underrepresented groups at UIC is below the 25<sup>th</sup> percentile of its peer group.

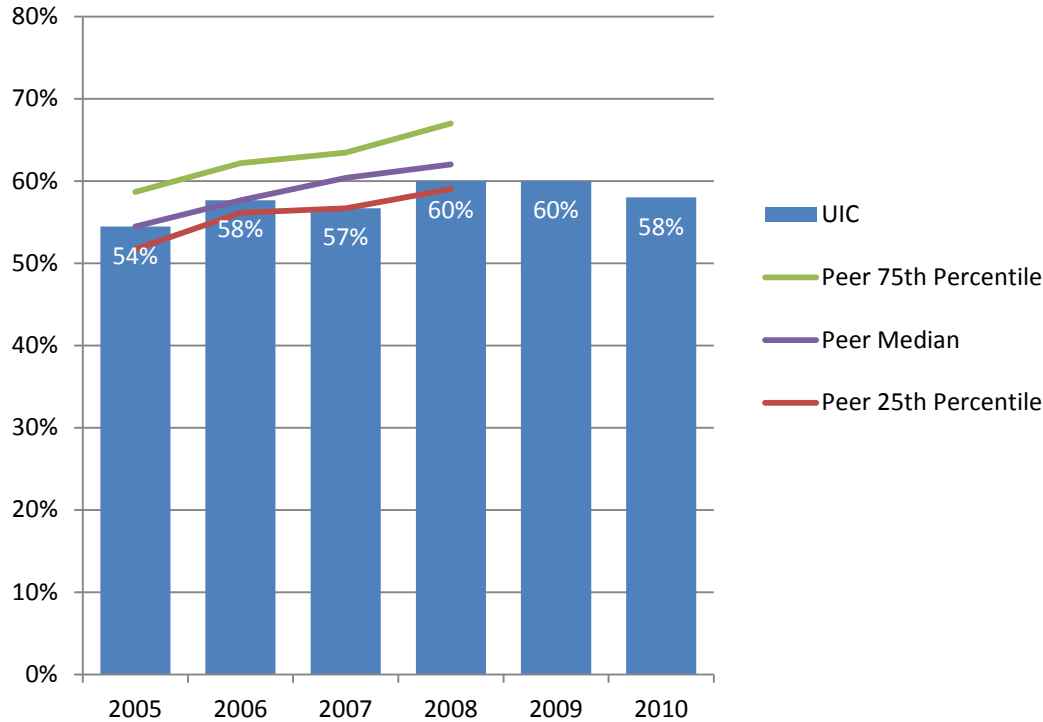


\* Includes Black, Hispanic, American Indian, Native Hawaiian/Other Pacific Islander, and multi-racial students.



# FIRST-TIME FRESHMEN SIX-YEAR GRADUATION RATES 2005 – 2010 COHORTS

The six year graduation rate at UIC is below the median and near the 25<sup>th</sup> percentile of its peer group.

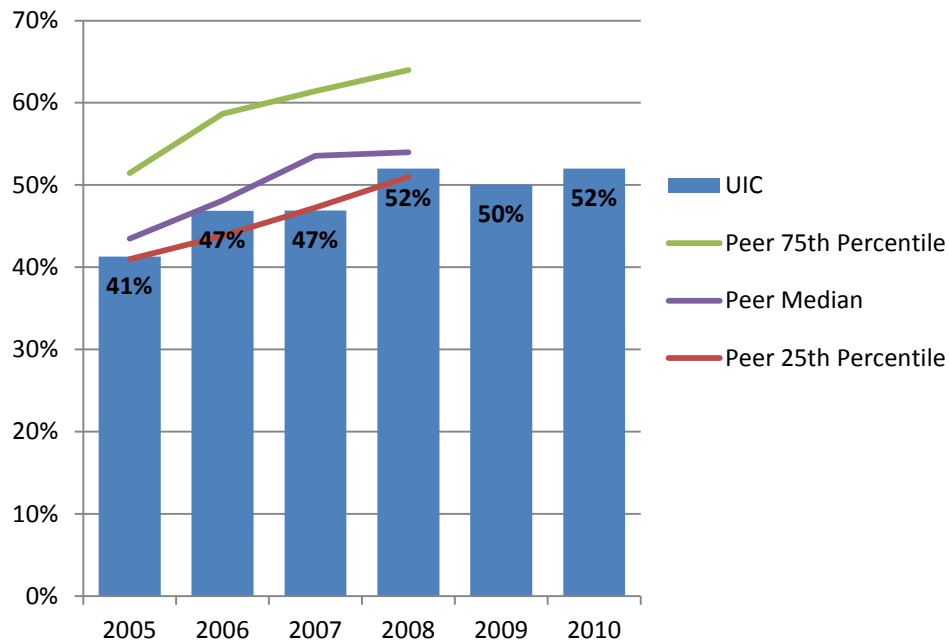


\* Year represent year of entering cohort (e.g., 2010 is fall 2010 entering freshmen graduating by summer 2016).



# PERCENT FIRST-TIME FRESHMEN FROM UNDERREPRESENTED\* GROUPS SIX-YEAR GRADUATION RATES, 2005 – 2010 COHORTS

The six year graduation rate of underrepresented groups at UIC is below the median and near the 25<sup>th</sup> percentile of its peer group.



\* Includes Black, Hispanic, American Indian, Native Hawaiian/Other Pacific Islander, and multi-racial students.



# DEGREES AWARDED

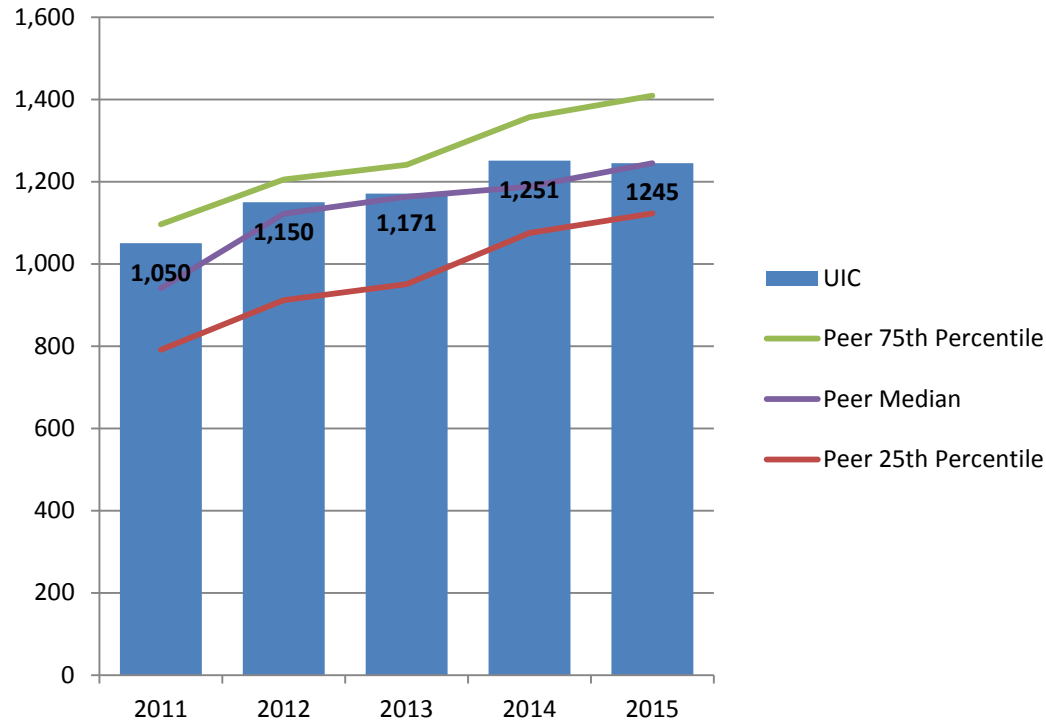


# AREAS OF EXCELLENCE

- **UIC awards more degrees in the following areas than peers:**
  - **Health related professional degrees**
  - **Total health related degrees**
  - **Degrees to underrepresented groups at all levels**

# NUMBER OF BACHELOR DEGREES GRANTED IN STEM\* FIELDS FY 2011 – FY 2015

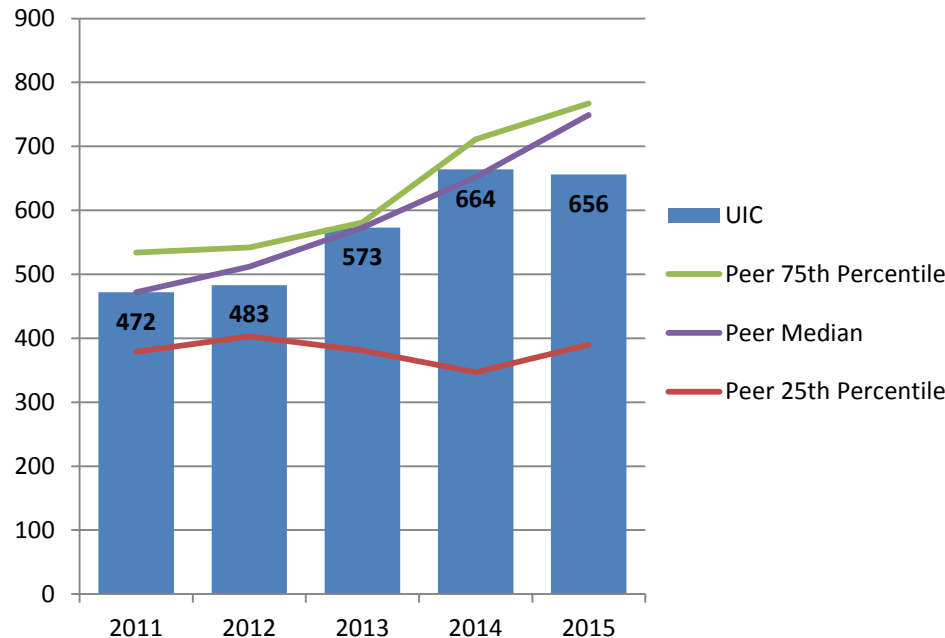
The number of bachelor degrees granted in STEM fields at UIC is similar to the median of its peer group. In 2015, UIC was the median.



\* Science, Technology, Engineering, and Mathematics.

# NUMBER OF MASTER AND DOCTORAL DEGREES GRANTED IN STEM\* FIELDS FY 2011 – FY 2015

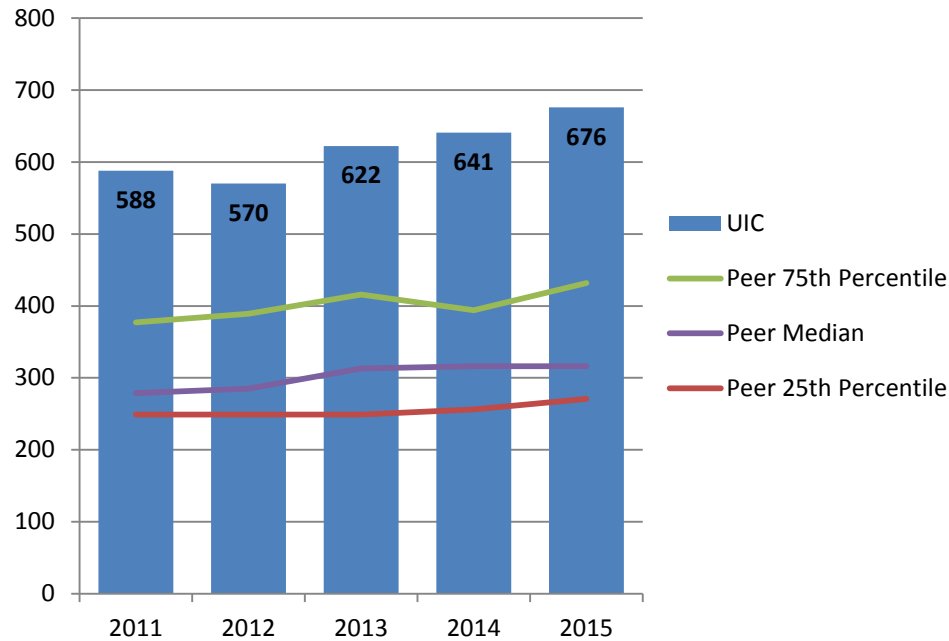
The number of graduate degrees granted in STEM fields at the University of Illinois at Chicago (UIC) is below the median of its peer group.



\* Science, Technology, Engineering, and Mathematics.

# NUMBER OF FIRST-PROFESSIONAL HEALTH-RELATED DEGREES GRANTED FY 2011 – FY 2015

The number of first-professional health-related degrees granted at UIC is the highest of its peer group. The next highest number is almost 200 fewer degrees annually (478 degrees conferred in 2015 by the University at Buffalo).

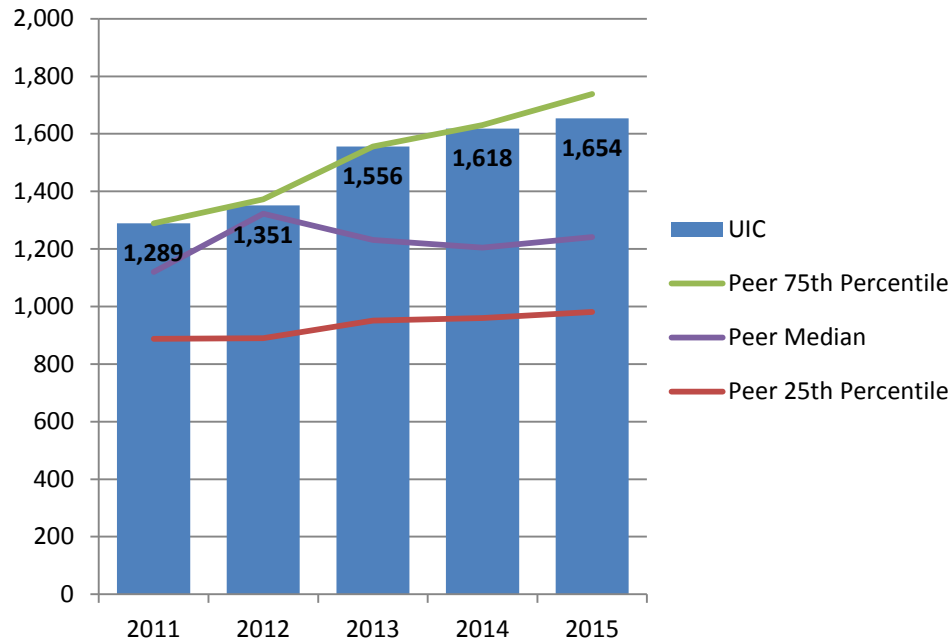


Note: Includes all first-professional degrees reported under the Classification of Instructional Programs (CIP) two digit code 51 (health sciences and related clinical sciences).



# NUMBER OF TOTAL HEALTH-RELATED DEGREES GRANTED FY 2011 – FY 2015

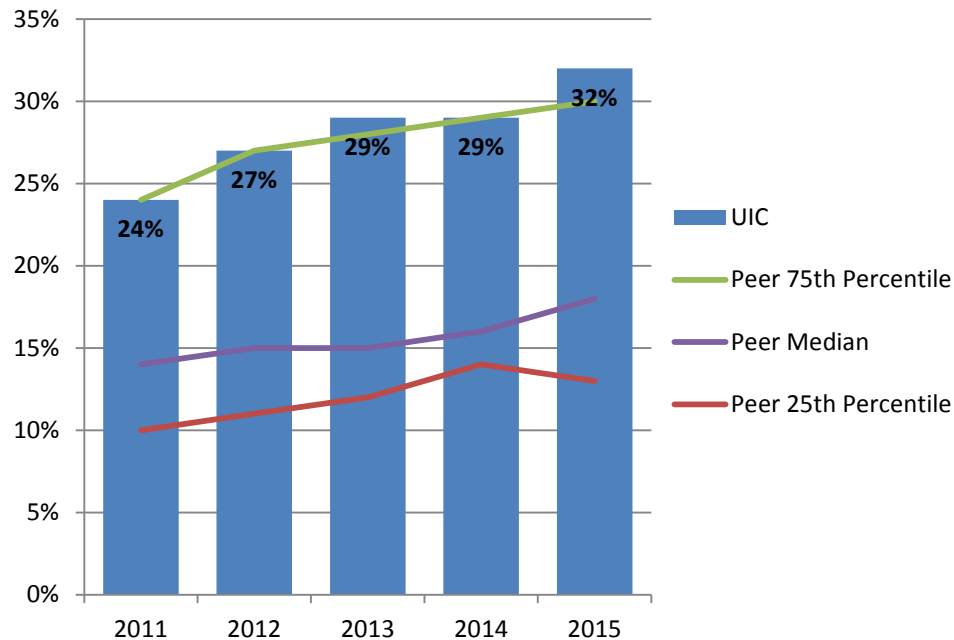
The total number of health-related degrees granted at UIC is higher than its peer group median.



Note: Includes all degrees reported under the Classification of Instructional Programs (CIP) two digit code 51 (health sciences and related clinical sciences).

# PERCENT BACHELOR DEGREES GRANTED TO STUDENTS FROM UNDERREPRESENTED\* GROUPS, FY 2011 – FY 2015

The percent of bachelor degrees granted at UIC to students from underrepresented groups is higher than all of its peer group members with the exception of the University of South Florida.

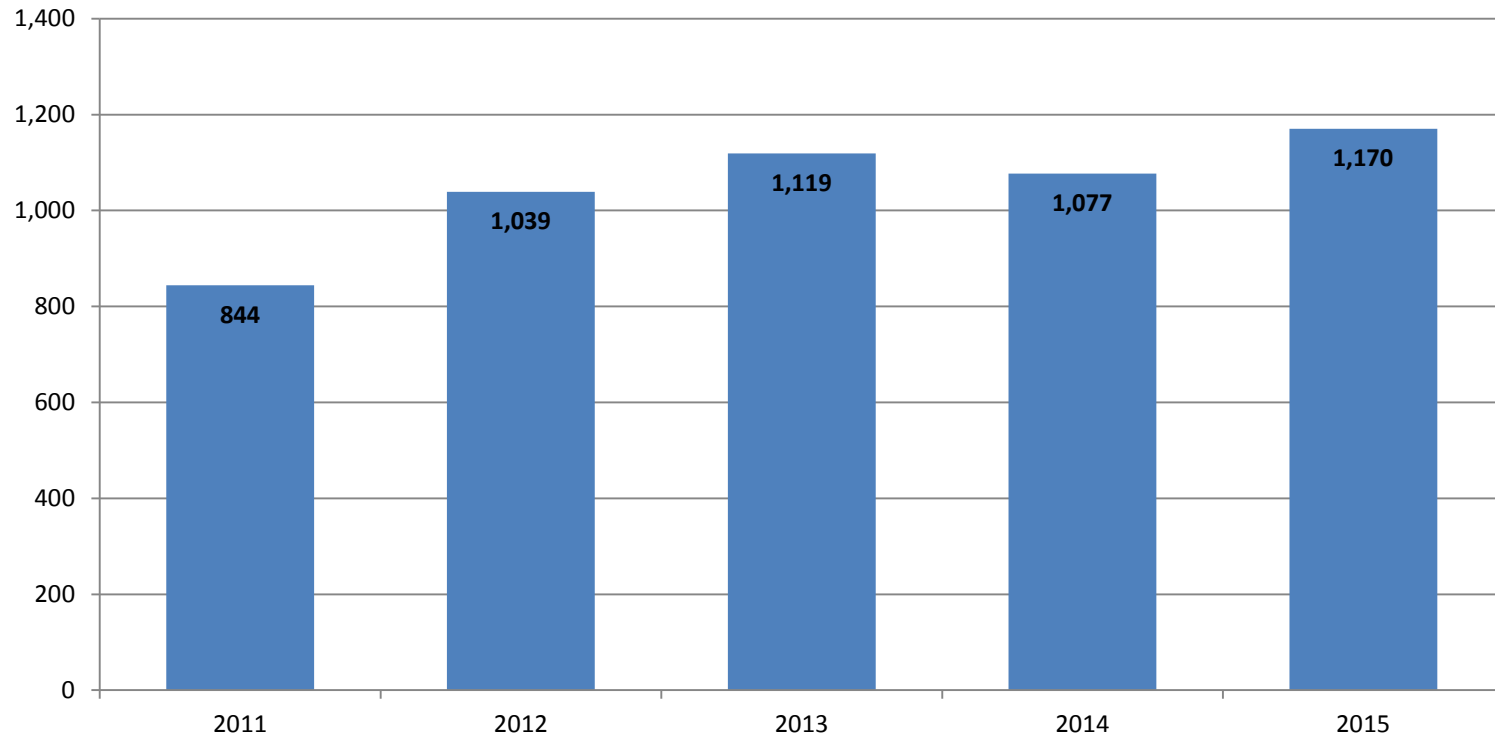


\* Includes Black, Hispanic, American Indian, Native Hawaiian/Other Pacific Islander, and multi-racial students.

Note: Only includes bachelor degrees, excludes associate degrees and certificates. Degrees awarded from July 1 to June 30 of each fiscal year.



# NUMBER OF BACHELOR DEGREES GRANTED TO STUDENTS FROM UNDERREPRESENTED\* GROUPS, FY 2011 – FY 2015



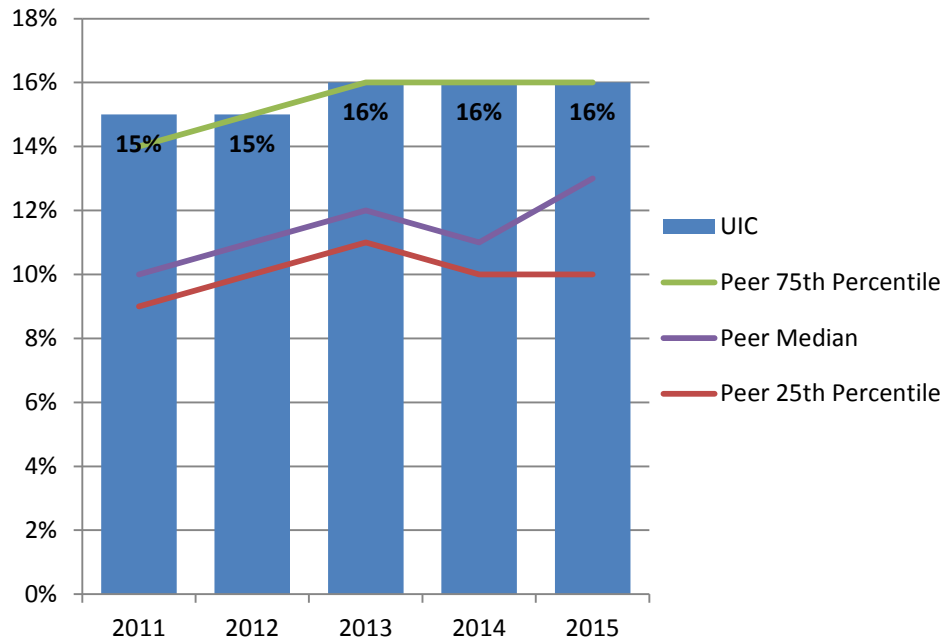
\* Includes Black, Hispanic, American Indian, Native Hawaiian/Other Pacific Islander, and multi-racial students.

Note: Only includes bachelor degrees, excludes associate degrees and certificates. Degrees awarded from July 1 to June 30 of each fiscal year.



# PERCENT GRADUATE AND PROFESSIONAL DEGREES GRANTED TO STUDENTS FROM UNDERREPRESENTED\* GROUPS, FY 2011 – FY 2015

The percent of graduate and professional degrees granted at UIC to students from underrepresented groups is higher than all of its peer group members except the University at Buffalo and the University of South Florida.

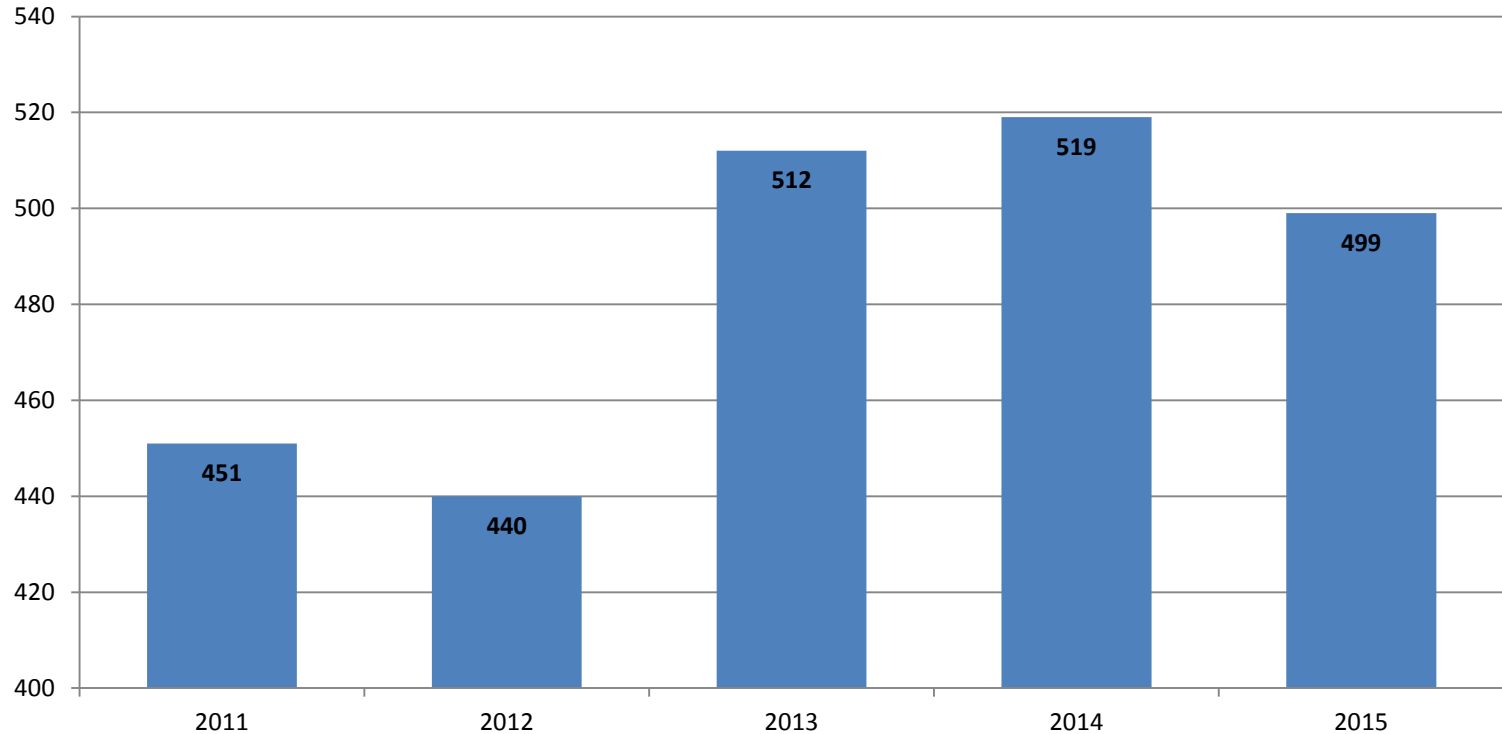


\* Includes Black, Hispanic, American Indian, Native Hawaiian/Other Pacific Islander, and multi-racial students.

Note: Only includes master, doctoral, and professional degrees; excludes certificates. Degrees awarded from July 1 to June 30 of each fiscal year.



# NUMBER OF GRADUATE AND PROFESSIONAL DEGREES GRANTED TO STUDENTS FROM UNDERREPRESENTED\* GROUPS, FY 2011 – FY 2015



\* Includes Black, Hispanic, American Indian, Native Hawaiian/Other Pacific Islander, and multi-racial students.

Note: Only includes master, doctoral, and professional degrees; excludes certificates. Degrees awarded from July 1 to June 30 of each fiscal year.



# GRADUATE EDUCATION



# AREAS OF EXCELLENCE

- Graduate and professional programs maintained high national rankings
  - #4 Occupational Therapy
  - #6 Pharmacy
  - #10 City Management and Urban Policy
  - #13 Dentistry (Source: Quality Stars)
  - #15 Physical Therapy
  - #17 Public Health
  - #19 Criminology
  - #23 Nursing Masters
  - #26 Doctor of Nursing Practice
  - #27 Social Work
  - #41 Education
  - #47 Best Medical Schools - Research

Source: *US News & World Report*, unless otherwise noted

# AREAS OF EXCELLENCE

- Offered professional development opportunities for graduate students:
  - Conducted over 50 academic and writing skills workshops/events
  - Emphasized topics such as life skills, wellness, and career and professional development
  - Provided courses in college level teaching, writing and communication skills, and responsible conduct of research
- Provided fellowship and research funding opportunities focused on interdisciplinary research, external proposal development, and degree completion in all disciplines
- Introduced underrepresented undergraduates from UIC and around the country to research and graduate school opportunities at UIC through the Summer Research Opportunities Program
- Provided summer transition and mentoring programs for underrepresented graduate students to enhance their success and engagement



# STRATEGIES FOR SUCCESS

- **Improve graduate student progress to degree:**
  - **Continue to mandate that programs track students and provide annual progress reports**
  - **Work with graduate programs to optimize requirements and shorten time-to-degree**
  - **Reduce financial stop-outs by increasing fellowship funding through philanthropic giving and providing assistance in identifying and applying for external funding awards**
- **Enhance recruitment, retention and graduation of underrepresented graduate students as a first step in diversifying faculty at UIC and around the country:**
  - **Identify and recruit promising underrepresented students who are interested in pursuing academic careers**
  - **Increase targeted fellowships, participation in undergraduate-to-graduate research transition programs and mentoring programs**

# STRATEGIES FOR SUCCESS

- **Address student job preparation and placement upon degree completion, particularly for non-STEM students:**
  - **Continue to develop and offer professional development workshops**
  - **Incentivize workshop participation by connecting attendance to fellowship funding**
  - **Encourage students to find summer internships through new funding opportunities**
  - **Improve career services for graduate students**

# UIC NUMBER OF DOCTORAL PROGRAMS , FALL 2015

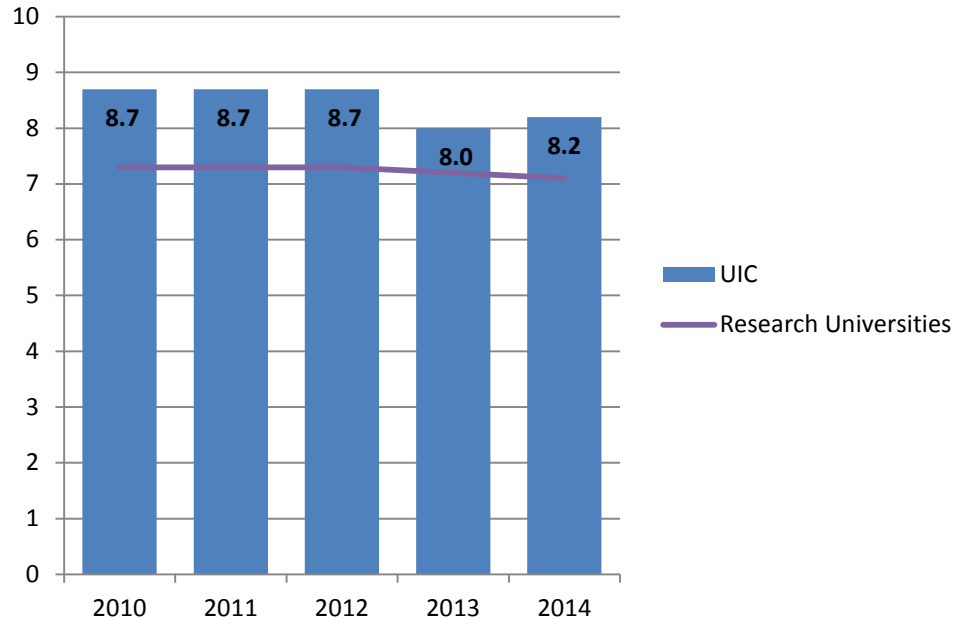
<u>Field of Study</u>	<u>Number</u>
Education	4
Engineering	7
Humanities	8
Life Sciences	18
Other Non-Science and Engineering	3
Physical Sciences	6
Social Sciences	10
	<u>56</u>

Note: List includes programs with enrollment in Fall 2015, including those programs in phase down. Fields of study at concentration level have been excluded.



# DOCTORAL MEDIAN TIME TO DEGREE SINCE STARTING GRADUATE SCHOOL (NUMBER OF YEARS), AY 2010 – AY 2014

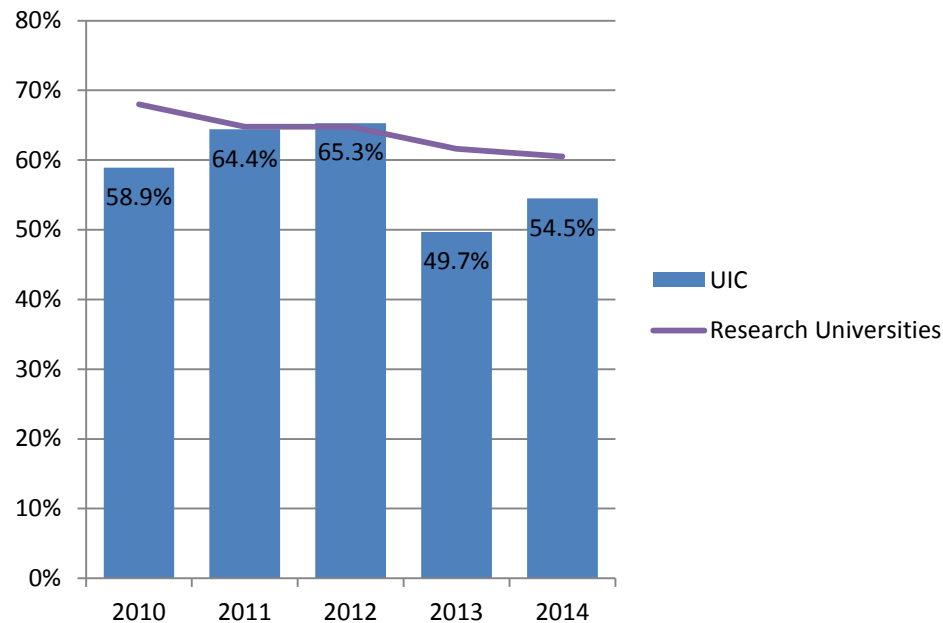
The time to complete a doctoral degree at UIC is higher than the average for research universities.



Data Source: Institutional Profile from the Survey of Earned Doctorates.

# PERCENT DOCTORATES WITH EMPLOYMENT OR POSTDOCTORAL RESEARCH TRAINING COMMITMENTS, AY 2010 – AY 2014

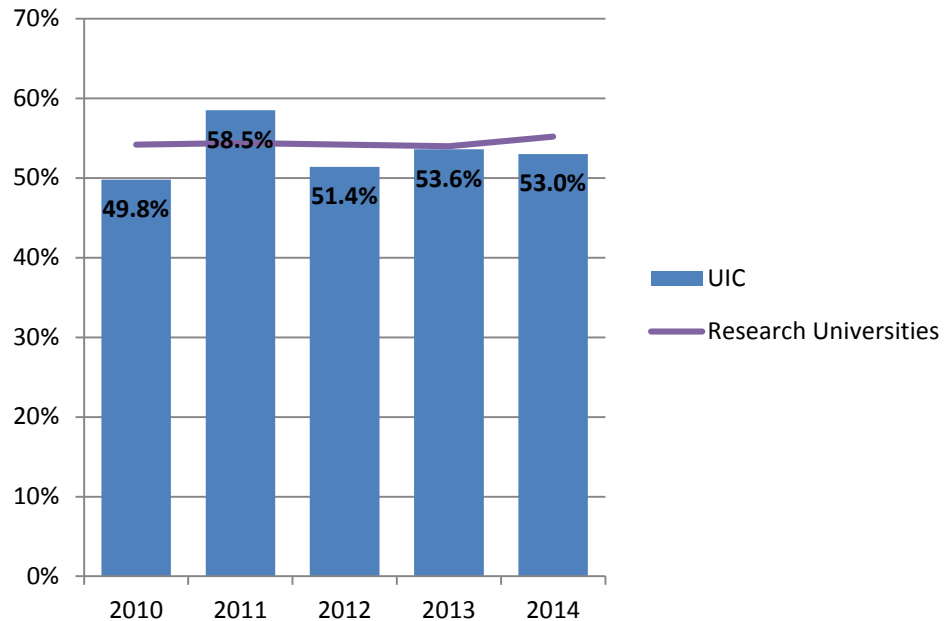
The percent of research doctorate recipients at UIC who have definite commitments for employment or postdoctoral research training is lower than the average for research universities.



Data Source: Institutional Profile from the Survey of Earned Doctorates.

# PERCENT DOCTORATES HAVING NO GRADUATE OR UNDERGRADUATE EDUCATION-RELATED DEBT, AY 2010 – AY 2014

The percent of research doctorate recipients at UIC who had no debt related to undergraduate or graduate education is slightly lower than the average for research universities.



Data Source: Institutional Profile from the Survey of Earned Doctorates.